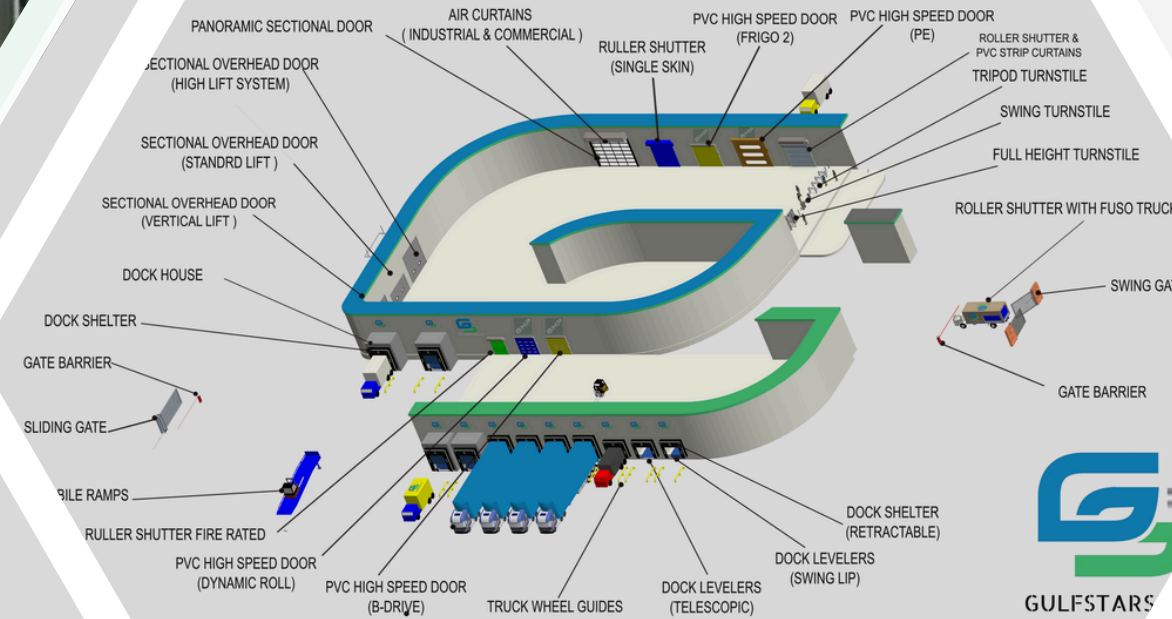




شركة نجوم الخليج للأبواب الأوتوماتيكية  
**GULF STARS CO. FOR AUTOMATIC DOORS**



## About company

We are an organization that offers world class quality products and services at affordable costs at your door steps.

We have been working hard to satisfy our customer needs not only in UAE, KSA, Oman but also in other GCC countries and United Kingdom. Our dedicated sales team would be glad to meet you and help you to get what you are looking for your facility.



ARAMCO  
APPROVED

أرامكو السعودية  
Saudi Aramco



# COMPANY PROFILE



Email: [support@gulfstars.llc](mailto:support@gulfstars.llc)



[www.gulfstars.llc](http://www.gulfstars.llc)



P.O Box No. 8587, Al Malaz, Riyadh - 12642 - KSA

# GULFSTARS. LLC

We are an organization that offers world class quality products and services at affordable costs at your door steps.

We have been working hard to satisfy our customer needs not only in UAE, KSA, Oman but also in other GCC countries and United Kingdom. Our dedicated sales team would be glad to meet you and help you to get what you are looking for your facility.

Our team is our asset. Their dedication, passion, and enthusiasm to deliver 100% for every project determines our success. We believe in Team work.

Our team enjoys working even on odd hours to satisfy the needs of our clients. Our team does not work as only employees, but each member of our team is a partner in business progress.



GULFSTARS.LLC

# ABOUT US:

It gives us immense pleasure to introduce ourselves as one of the fast-growing companies in the Middle East.

We are an organization that offers world class quality products and services at affordable cost at your door step.

Our dedicated sales team would be glad to meet you and help you get what you are looking for your facilities. Our team is our asset. Their dedication, Passion and Enthusiasm to deliver 100% for every project determines our success. We believe in team work.

Our team enjoys working even in odd hours to satisfy the needs of our clients.

Our team does not work like only employees, but each member of our team is a partner in business progress.





GULFSTARS.LLC

# LET'S DON'T FORGET!!!

## VISION & MISSION

### VISION



To become one of the leaders and choice of suppliers for automatic doors and industrial equipment in MENA & UK.

### MISSION

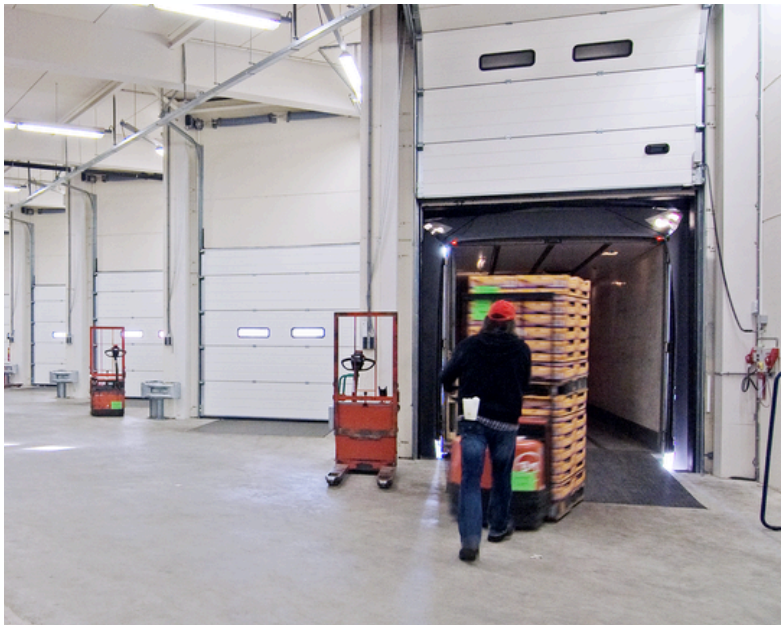
Is to provide World class Quality, affordable cost and unmatched after sales services.





# PRODUCTS SHOWCASE

We make sure that the products we sell to our clients are world class products



# INDUSTRIAL SECTIONAL OVERHEAD DOORS

GS Double-skinned GI steel sandwich panel 40mm and 42mm thick insulated by means of CFC-free polyurethane, various Panel height: 500/600/610mm height steel sandwich panel Section.

One row acrylic double glazed Acrylic Rectangular Pane (2 vision panels in standard 3/3metersdoor) Can be increased based on door size and customer requirement.

Door Control equipped with Fire alarm & BMS. Interlocking with Dock Levellers for loading bays.





GULFSTARS.LLC

# INDUSTRIAL SECTIONAL OVERHEAD DOORS

The overhead sectional door (insulated panels) is a vital element for warehouse providing unmatched facility for passage and loading/unloading bay operations & providing passage for heavy equipment or moving vehicles or other objects at special areas. Together with hydraulic system, the sectional door grants a supreme and total lasting open-close reliability of the door.





GULFSTARS.LLC

# INDUSTRIAL SECTIONAL OVERHEAD DOORS

## 1). STANDARD LIFT TYPE SECTIONAL DOOR

this type is most commonly used as it is easy & feasible for most of the locations as per the available space above the door opening. A lintel height/ headroom of 1m is enough to install standard lift sectional door.

## 2). HIGH LIFT TYPE SECTIONAL DOOR

high lift doors can be installed if the ceiling is sufficiently high & the lintel height/ headroom is more than 1m.

## 3). LOW LIFT TYPE SECTIONAL DOOR

if the ceiling height is low & lintel height/ headroom is less than 1m, then low lift type sectional door can be installed.

## 4). VERTICAL LIFT TYPE SECTIONAL DOOR

vertical lift can be installed easily where the ceiling is double the height of door, or the lintel height/ head room is at least same as the height of door.



# INDUSTRIAL SECTIONAL OVERHEAD DOORS

**PASS DOOR/ EASY PEDESTRAIN WAY  
(Optional)**

An addition of a pedestrian door within a sectional door makes it very easy passage serving for staff/ employees/ workers, without unnecessary operation of a complete door every time unless it is required to be operated.



# SANDWICH PANELS

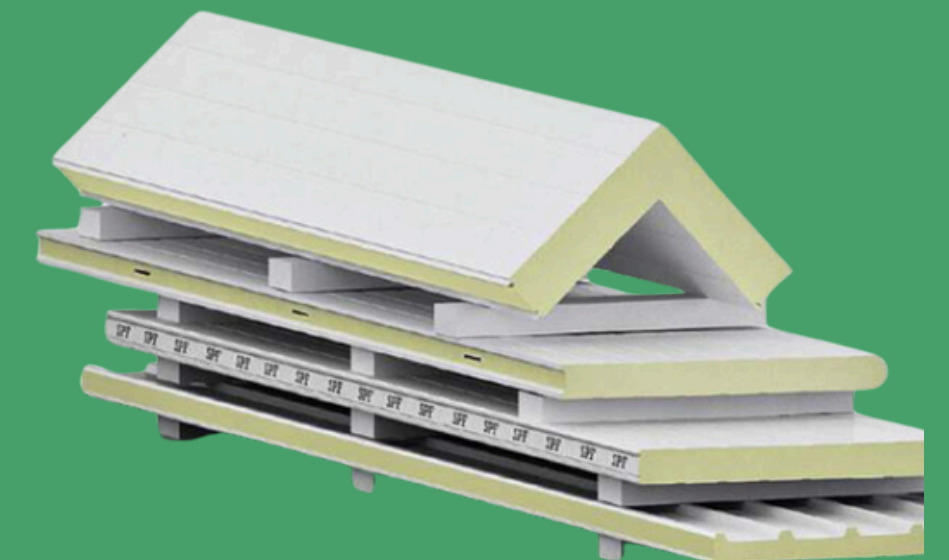
## (ROOF AND WALL)

Our roof and wall panels are designed for premium insulation, ideal for cold storage rooms and applications requiring high hygiene standards. The roof panels are available in heights of 55mm, 75mm, and 100mm, providing flexible insulation options.

### Wall Panels

- **Male & Female Joint:** Available heights include 500mm, with thickness options of 75mm, 100mm, 125mm, 150mm, and 200mm.
- **Cam Lock Joint:** Thicknesses of 75mm, 100mm, 125mm, and 150mm for secure interlocking.
- **Corner Panels:** Designed with either Male & Female or Cam Lock joints, enabling versatile corner assembly.

Each panel features a specially coated surface to protect against bacteria, ensuring high durability and sanitary conditions. The double tongue-and-groove joints offer optimal thermal insulation, making them suitable for both wall and ceiling applications.



# CHILLERS AND FREEZERS DOORS

## (SLIDING AND HINGED)

Our doors are tailored for optimal performance in chiller and freezer environments, available in both sliding and hinged options.

- **Sliding Doors:** Suitable for both chillers and freezers, with a thickness of 75mm for chillers and 100mm for freezers.
- **Hinged Doors:** Designed for reliable insulation, with 70mm thickness for chillers and 90mm for freezers.

Standard sizes are available for each type—please refer to the Table 1 & Table 2. for specifications.

Sliding doors  
Table 1

Standart Sizes
220 cm x 120 cm
250 cm x 150 cm
250 cm x 200 cm
300 cm x 200 cm
300 cm x 250 cm
350 cm x 250 cm
350 cm x 300 cm

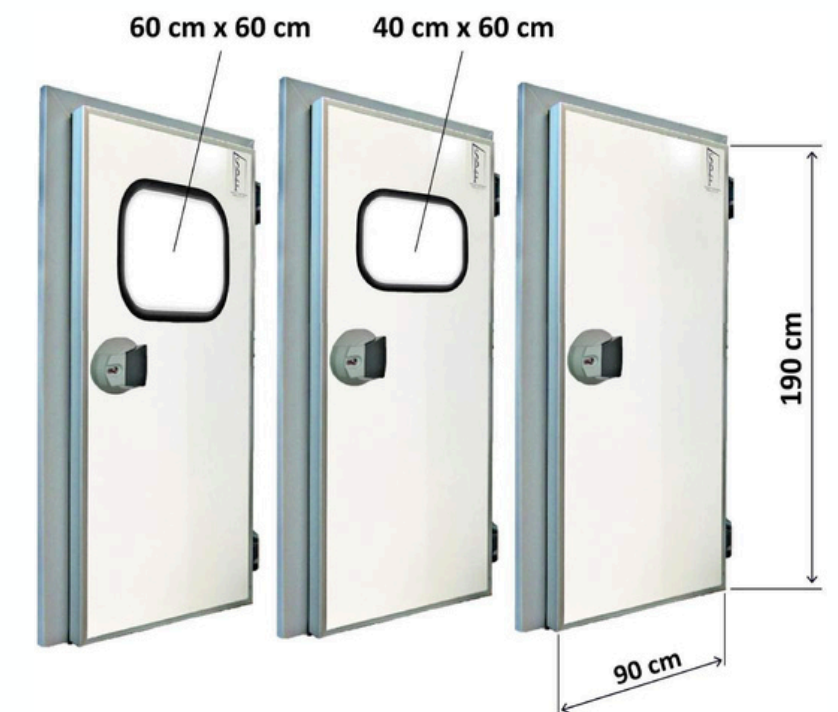
سماعة ٧٥ مم للتبريد  
75 mm for Chellir  
سماعة ١٠٠ مم للتجميد  
100 mm for Frezeer

Hinged doors  
Table 1

Standart Sizes
180 cm x 80 cm
190 cm x 90 cm
200 cm x 100 cm

سماعة ٧٠ مم للتبريد  
70 mm for Chellir

سماعة ٩٠ مم للتجميد  
90 mm for Frezeer





# METAL DOORS

Gulf Stars specializes supplying high-quality metal doors tailored for diverse industries. Our doors are designed to meet safety, functionality, and aesthetic requirements, ensuring unmatched durability and reliability.

**Fire-Rated Doors:** Certified to provide fire protection for critical safety.

**Non-Fire Rated Doors:** Durable and customizable for general applications.

**Insulated Doors:** Thermal and sound insulation for energy efficiency.

**Blast & Bulletproof Doors:** Heavy-duty security for industrial and high-risk areas.

**Soundproof (STC-Rated) Doors:** Noise control for theaters, studios, and meeting rooms.

**Lead-Lined Doors:** Radiation protection for medical and secure environments.

**Louvered Doors:** Ventilated designs for mechanical and utility rooms.

## Features

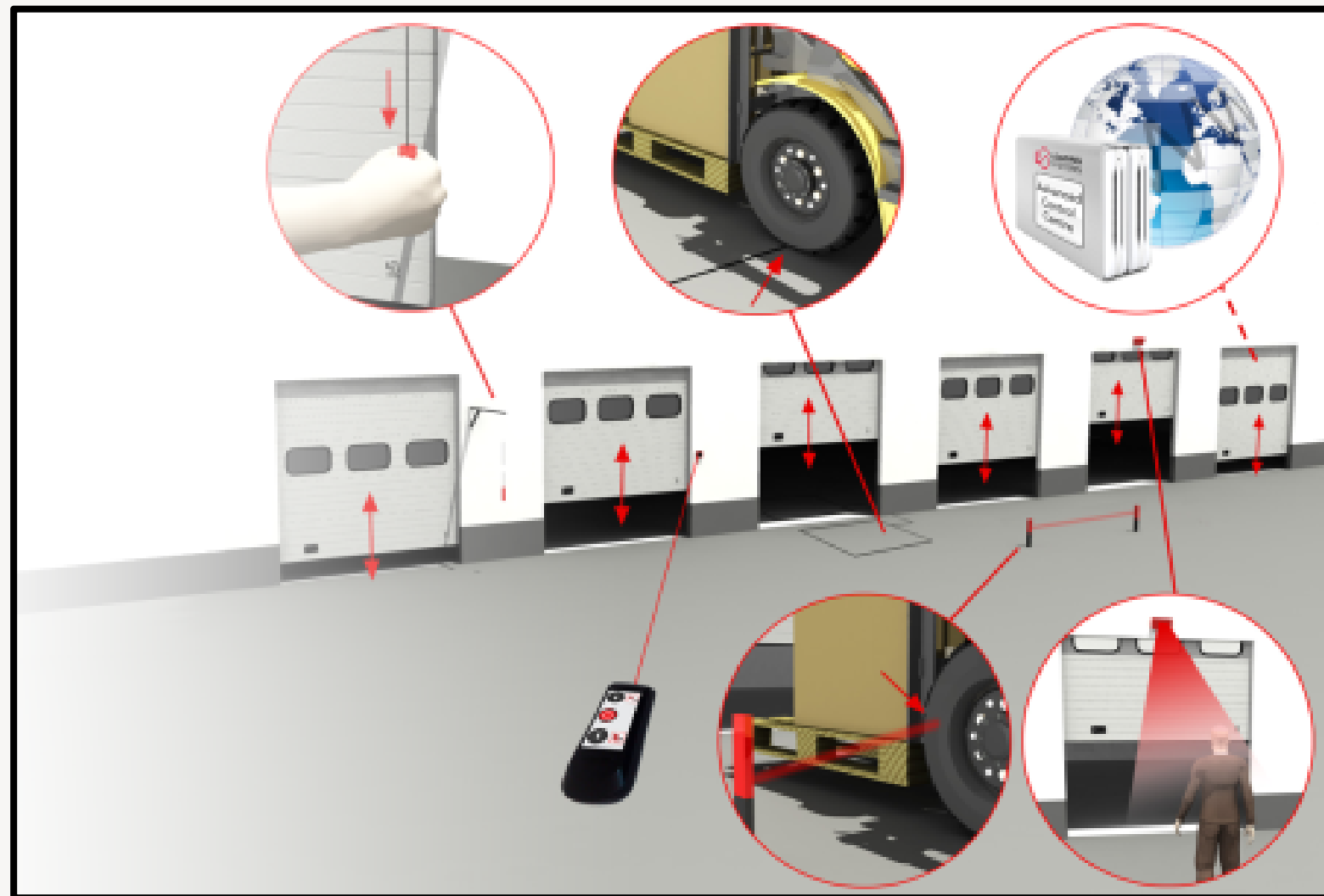
- Customizable sizes, designs, and finishes.
- Precision-engineered with advanced machinery.
- Options for vision panels, advanced hardware, and embossed finishes.

# Garage doors

- Highest Quality Insulation For Your Environment
- Higher Rated Torsion Springs For Longer Life
- Appropriate Steel Gauge Measurement
- Convenience and Security with Touchless, Easy Access
- High Quality Expert Installation
- Style To Match Your Home's Aesthetics
- Highly Knowledgeable and Available Service Team.



## VARIOUS OPENING MECHANISMS



**GARAGE DOORS FOR YOUR SECURED  
CAR PARKING**

## PANORAMIC DOORS FOR SHOWROOMS



## FULL VISION DOORS FOR SHOWROOMS



GULFSTARS.LLC

# Technical Data



Material options	304 STAINLESS STEEL 0.38mm-0.48mmAluminum material door panel with polyethene foam filledGalvanized steel plate, with a ny color
Panel Thickness	40mm
Door panel height	450 mm, 500 & 550mm
Normal Color	Porcelain white, light gray, coffee color and stainless steel color, or any color.
Rail & Fitting	Hot dip galvanized steel rail and galvanized bracket & hinges. Aluminum powder coated 2.8mm thick rail is also optional.
Sealing	With full sealed, weather resistance & well protection& soundproof.
Control	Automatic & remote controlled
Power rate:	220V/380V
Feature for door motorized system	Route memorable, door self locking when power cut off, self-checking up, non hand nipping, safety operation.
Certification	ISO & CE certificated.

# Electromechanics gear motor

Available in two versions JACK 24.50 & JACK 24.80



Description		
MODEL	JACK 24.50	JACK 24.80
Power Supply (Vac - Hz)	115 VAC / 230 VAC	115 VAC / 230 VAC
Motor Supply	24 VDC	24 VDC
Max Absorbed Current	3 A	3 A
Max Torque	50 Nm	80 Nm
Output Speed	34 rpm	22 rpm
Shaft Hole	1" (25,4 mm)	1" (25,4 mm)
Duty Cycle	Intensive use	Intensive use
Operating temperature (C)	-20C / +50C	-20C / +50C
Max Door Surface	20m2/max	35 m2/max
Weight	7,6 Kg	7,7 Kg



## PVC HIGH SPEED DOORS

Industrial high-speed doors provide very short opening and closing times, thus limiting the passage of cold or hot air, of smoke, dust, insects or birds. They also ensure a good thermal insulation. High speed doors are used most often to separate interiors, but are suitable for exterior use too.

High speed doors are developed to manage high traffic area and insulation problem. The door system is operated with high speed and manufactured from light structure. High speed door can be used at interior and exterior applications, also they have been using all industrial complex.

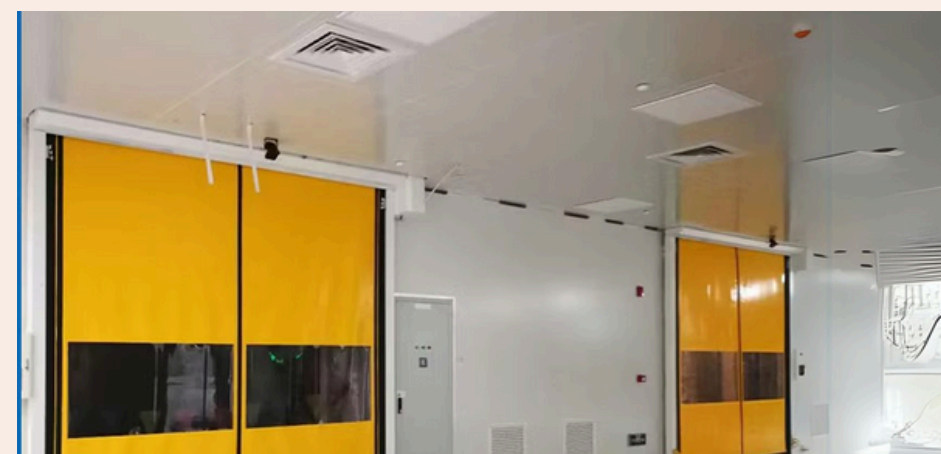
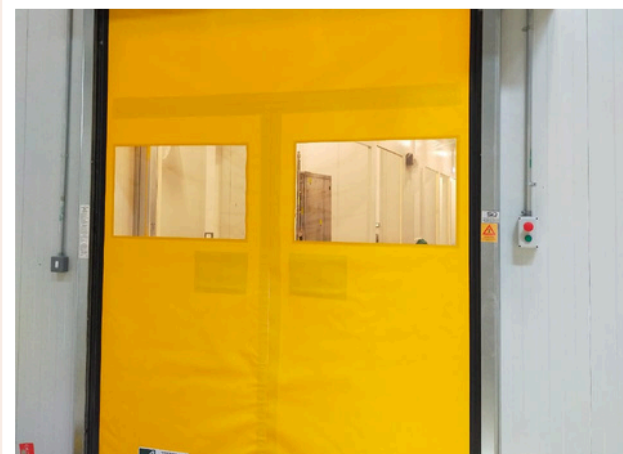
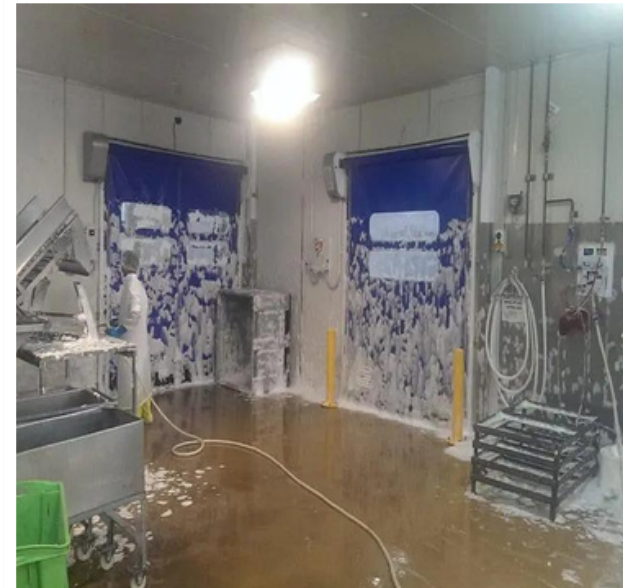


GULFSTARS.LLC

# PVC HIGH SPEED DOORS



GULFSTARS.LLC



We offer a range of high-speed doors tailored to different needs: Dynamical Roll for versatile use with high safety standards, B Drive Push & Pull for windproof outdoor applications, Frigo 2 for temperature control from 35 to -35°C, and PE high-speed self-repairing PVC doors for easy cleaning and top hygiene standards.

+966 58 322 9921

support@gulfstars.llc



www.gulfstars.llc



GULFSTARS.LLC

## TECHNICAL DATA

Maximum Dimension	W 8000 mm x H 8000 MM
Speed	Max Opening Speed up to 3 m/s
	Closing Speed 0.8 m/s adjustable
Frame/ motor Hood	3000 x 3000 class 4 5000 x 5000 class 3 7000 x 7000 class 2 8000 x 8000 class 1
Curtain	Standard PVC curtain 1300 grl m square
	Operational: 1700 gr/ m sqare insulated 7mm, 3.3 w/msqare and k Translucent 35/40% FDA ( White) Antisatic



# INDUSTRIAL ROLLER SHUTTERS

GS Rolling Shutters are ideal for situations where side room is at premium and Security is required. Our rolling shutters require very little head room above the structural opening. They combine strength with elegance along with durability and are designed for both external and internal applications. Each of our Rolling Shutters is solidly constructed to promote trouble-free operation and long life. The Rolling Shutters can also be designed as per client's specifications or conforming to IS6248. We offer all types of roller shutters with European and Asia Pacific Automation to give you customized solution on opening Mechanism.



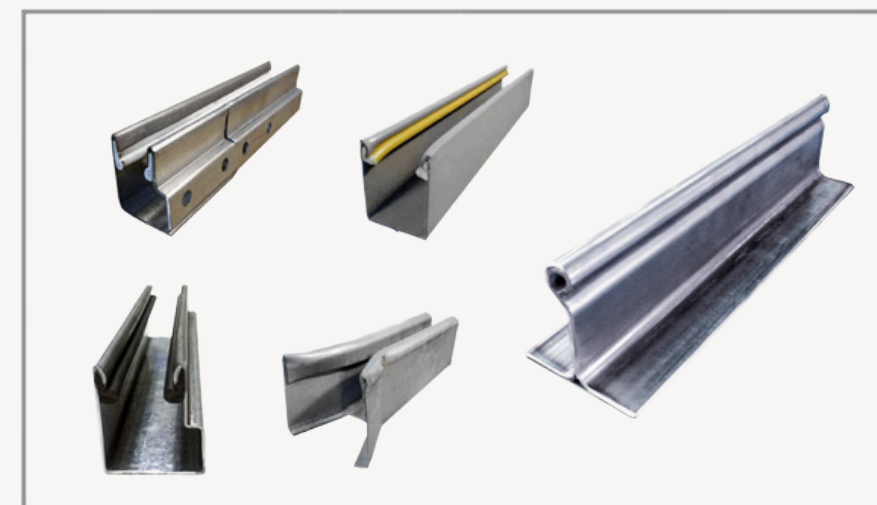
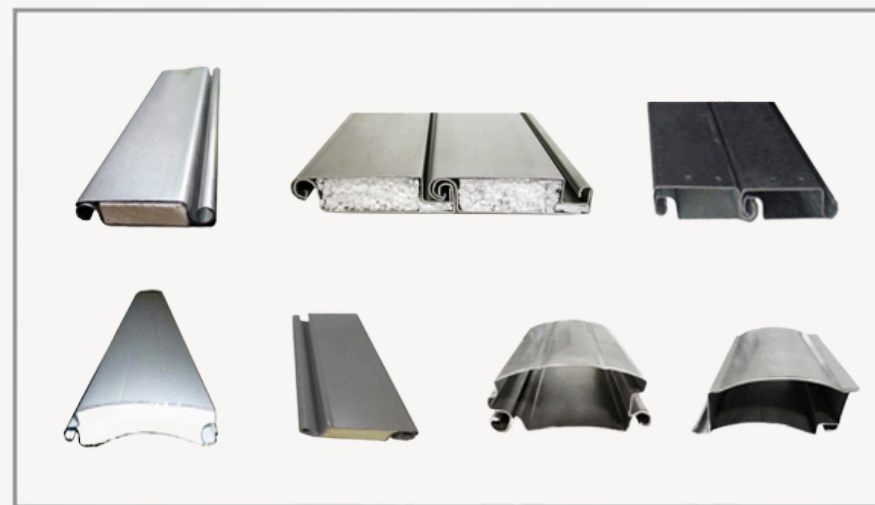
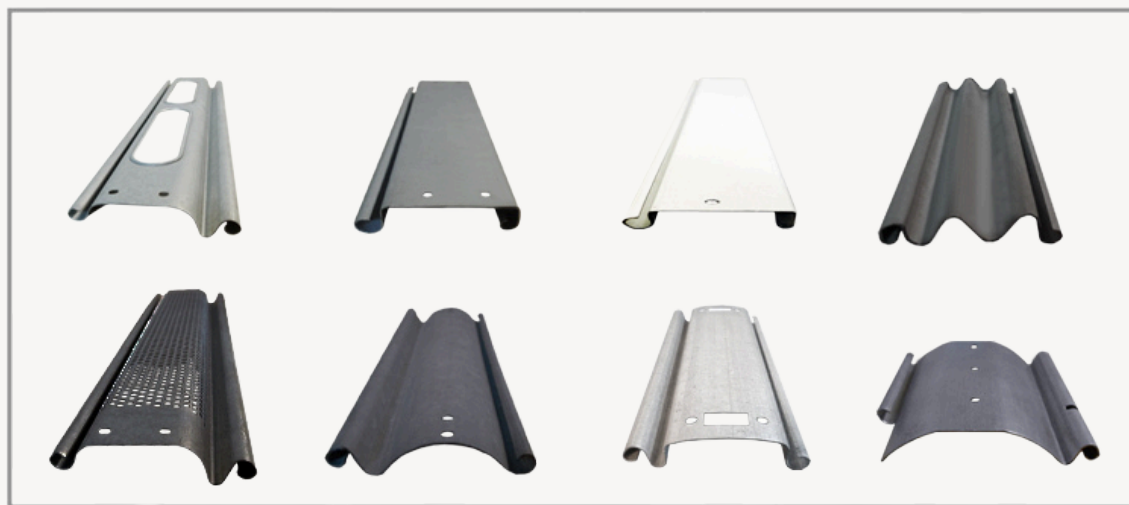
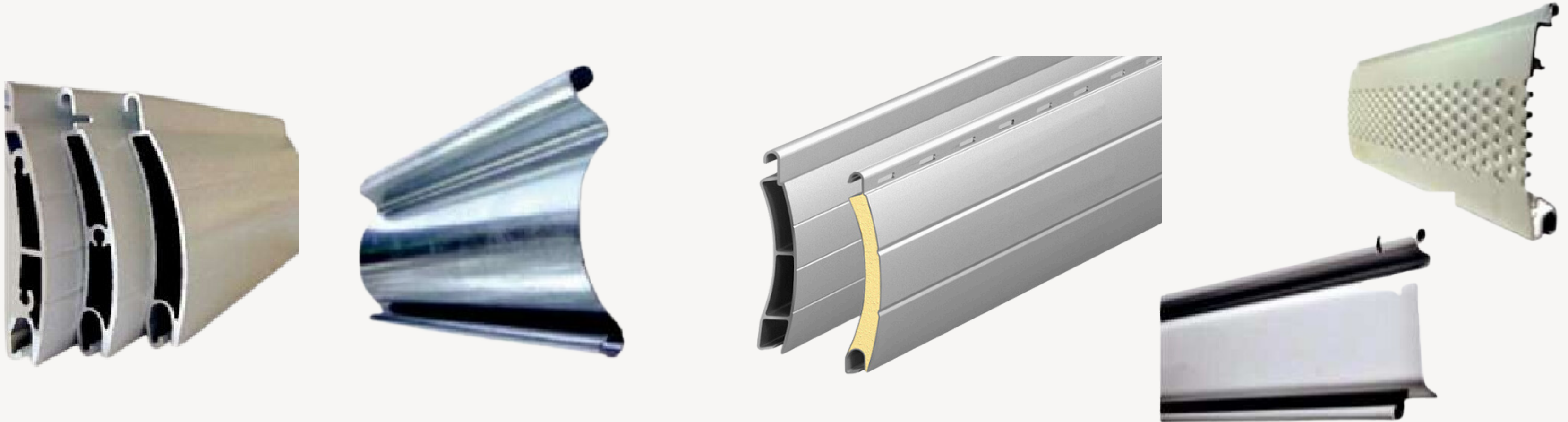
# ROLL UP DOORS

Rollup doors for garages and small door openings where cost is the key factor.

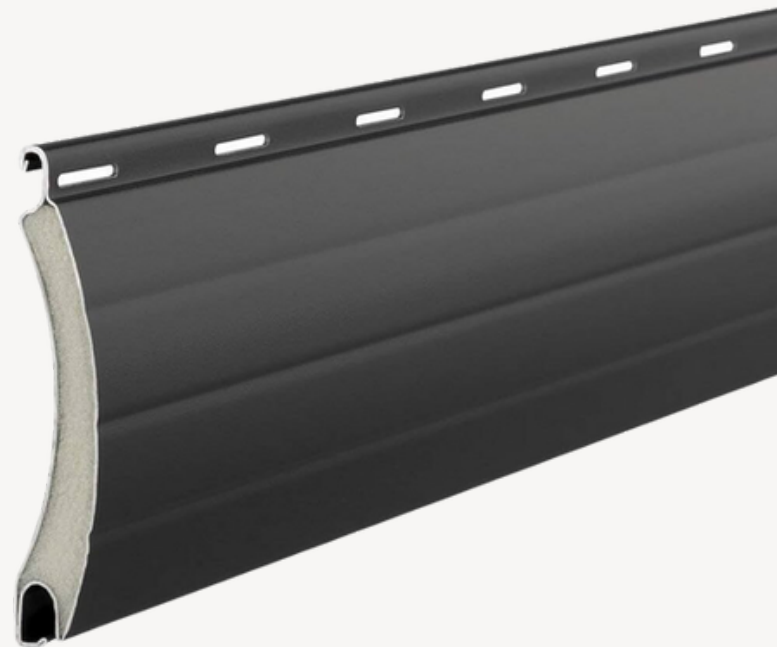
<b>Curtain:</b>	<b>0.4 ~ 0.5mm Thickness</b>
<b>End Lock:</b>	<b>Vibroglides</b>
<b>Weather Strips:</b>	<b>Rubber</b>
<b>Finish Coat:</b>	<b>Beige/White</b>
<b>MaxDimension:</b>	<b>W400mm x H4000mm</b>



# STANDARD ROLLER SHUTTERS

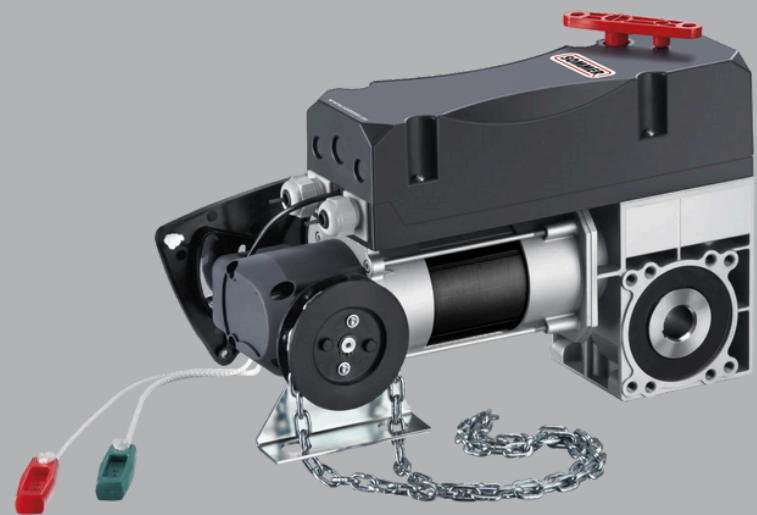


# INSULATED ROLLER SHUTTERS



<b>Curtain:</b>	0.6mm – 1.2mm thick galvanized insulated steel
<b>End Lock:</b>	Hard nylon or Malleable iron
<b>Finish Coat:</b>	White
<b>MaxDimension:</b>	W7000mm x H8000mm

# WORLD CLASS DOOR OPERATORS



**SOMMER**



**ACM**  
ITALIAN ROLLING POWER



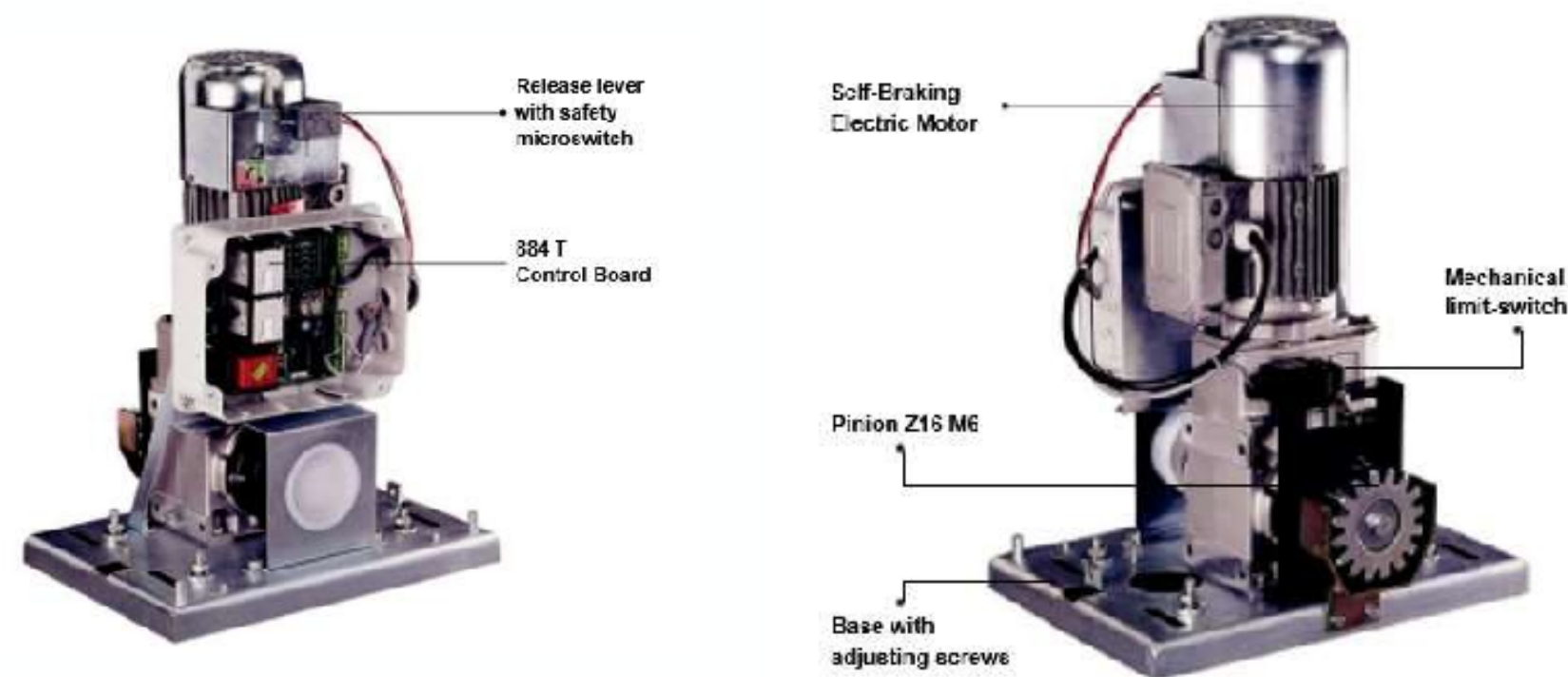
**BENINCA**<sup>®</sup>  
TECHNOLOGY TO OPEN



**Nice**

# AUTOMATED STEEL SLIDING AND SWING GATES

- Automatic sliding gates make it easier for authorized vehicles to enter and leave your premises.
- Our Elegant Design and flexible automation products can be Chosen to different frame dimensions and applications making your sliding gates Smart, Safer & Secure.
- Motors from World renowned leaders of Automation.





GULFSTARS.LLC

# SPECIFICATIONS

Inputs - Open, partially open, stop, closing safety devices, limit-switch

Outputs - Indicator-light, flashing lamp, motor, 24 Vdc power supply for accessories

Programming - Pause time (5/10/15/30/60/120/180 sec.), logics A1/A2/S1/S2/E1/E2/B/C, pre-flashing.

Specifications of 884 T Control Board	
Power supply	230 Vac 3ph (+6% -10%) 50 (60) H
	400 Vac 3ph+N (+6% -10%) 50 (60)
Motor maximum load	Hz
Accessories output	1300 W
Operating ambient temperature	24 Vdc 500 mA max -20°C ÷ +55°C
Power supply to indicator-light	24 Vac (5W max)
Two protection fuses	5 A transformer 1.6 A accessories
Safety timer	255 sec.

Technical Specifications	884 MC THREE-PHASE
Power supply	230 Vac 3ph (+6% -10%) 50 (60) Hz
	400 Vac 3ph (+6% -10%) 50 (60) Hz
Absorbed power	850 W
Absorbed current	2.7 A(230V) - 1.6 A(400V)
Torque	from 0 to 155 Nm
Motor rotation speed	1.400 rpm
Reduction ratio	01:43.2
Operating ambient temperature	-20°C ÷ +55°C
Weight	50 kg
Protection class	IP 55
Type of oil	FAAC oil XD 220
Gate speed	10 m/min (Z16)
Limit-switch	With lever and roller microswitch
Clutch	Twin disk in oil-bath

Model	Use		Control Board
	Max weight (kg)	Use frequency (cycles/hour)	
884 MC THREE-PHASE	3.5	50 100 (2.000 kg)	884 T included

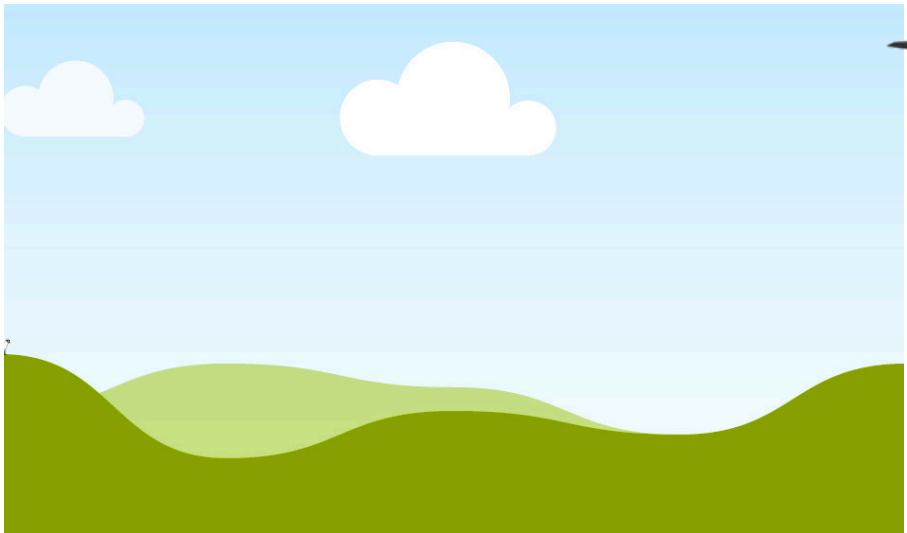
# MATERIAL HANDLING AND WAREHOUSE EQUIPMENT

## DOCK LEVELERS:

### Hydraulic Dock Levelers with Hinged Lip

Radius Lip or Hinged Dock Levelers allow the dock to connect with the truck bed, thus making it possible to drive directly on and off with fork-lift trucks etc. The self-cleaning lip hinging system does not retain rubbish with automatic end-of-run, so as to keep the 25 mm security distance between the folded lip and structure as per EN1398 & EN 349.

Hydraulic Dock Levelers are available in various size and capacity to suit your requirements Capacity 6000KG / 10000KG / 12000KG / 15000KG



Width (MM)	Length (MM)	Height (MM)
2000	2000	550/600
2000	2500	550/600
2000	3000	550/600
2000	4500	550/600





GULFSTARS.LLC

### **Telescopic Dock Levelers with Sliding Lip:**

Telescopic Lip Dock Levelers are ideal for connecting vehicles unable to drive near dock i.e., sea containers, side loading railway wagons etc. These types can be supplied with a lip extending up to 1 m.



### **Mechanical Edge Dock Levelers:**

Size: Total Width 2425mm

Platform Width: 2000mm

Total Length: 700mm

Lip Length beyond Bumpers 245mm

Bumper Projection: 350mm

Working Range: 100mm +/-



+966 58 322 9921



support@gulfstars.llc



www.gulfstars.llc

# MOBILE RAMPS

## Motorized and manual Mobile Ramps

GS Mobile hydraulic Ramp is cargo handling and forklift with auxiliary equipment to use, adjustable height according to the level of automobile car, truck directly through the device into the interior of the bulk cargo handling, only a single person operation, you can achieve rapid loading and unloading of goods. It enables companies to reduce a lot of labor, improve efficiency, to obtain greater economic benefits.

Model	GS-DCQY10-1.8
Overall Size	8000mm (L) * 2100mm (W) * 1100mm (H)
Platform Size	Slope Length 7000mmTail Plate Length 850mm Tongue Plate Length 400mm Width 2000mm
Load	10T
Distribution Power	Manual Hydraulic pump, a pair of synchronousshand crank s (Stroke 400)
Adjustable Range	1100-1800mm
Guardrail High	200mm (40*80*3mm Rectangular Pipe)
Main Beam	160*80*4 Rectangular pipe 120*60*4 5 pcs
Vice Beam	100*50*4 Rectangular Pipe
Solid Tire	500-8
Dock Ramp & Container	Dock Ramp Body is welded with hooks andfixed with steel chains
Paint Color	Blue



GULFSTARS.LLC

# DOCK SHELTERS





GULFSTARS.LLC

## GATE BARRIERS

Gate Barrier (Arm Barriers) are used where there is frequent movement of vehicles at the entrance of any factory or office Building. It gives easy and fast access to vehicle with a good security check. Gate Barriers can also be accessed by RFID Cards, Remote Controls, Induction Loop in addition to switch button located at security guard room. Gate Barriers are of different size based on the gates available at entry/Exit location. from 4000mm to 7800mm Gate Barriers are available.



+966 58 322 9921



support@gulfstars.llc



www.gulfstars.llc



GULFSTARS.LLC

## **Some Features of Gate Barriers**

24 VDC electromechanical barrier for intensive use with control unit with integrated receiver, battery charger and extended range switching power supply from 100 to 250 VAC, 50/60 Hz

Easy installation and possibility of quick connection for operation of opposed barriers, thanks to the SIS accessory board

Reduced energy use on stand-by

Possibility to install FTC.S photocells using concealed system so that they are perfectly integrated

Simple, fast and reliable boom balancing system

Adjustable slow-downs

Available also in the stainless-steel version, LADY.5I

TECHNICAL DATA LADY.5	
Power supply	100 ÷ 250 Vac (50-60Hz)
Motor supply	24 Vdc
Max absorbed current	1.6 A
Power consumption in stand-by	40 mA
Torque	205 Nm
Opening time	3.5" ÷ 6"
Duty cycle	Intensive use
Protection level	IP44
Operating temperature	-20°C / +50°C
Weight	50.8 kg
Items nos. (Per Pallet)	9



GULFSTARS.LLC

# INDUSTRIAL AIR CURTAINS

NOORAH air curtains offer superior environmental separation by keeping out cold winds in winter and hot winds in summer without compromising visibility levels, ensuring that pedestrian and vehicle traffic remain safe throughout the year.

Internal temperatures of the premises remain stable while doors and windows are open. Air Curtains Provides Heavy Pressure of air that prevent passage of pests and airborne pollutants from infiltrating work environments, offering high level of cleanliness that certain applications needed.





GULFSTARS.LLC

There are several Type of Air Curtains based on the location and application. Most common used are Commercial & Industrial Air Curtains We represent NOORAH Industrial Air Curtains, which offers very high efficiency of air even from the height of 8 meters. Specially made for industrial Doors which has a height of above 4.5 meters and up to 8 meters.

## Features of Noorah Air Curtains

- Metal casing, strong fire resistance, simple installation and easy clean
- The maximum installation height can reach to 8.0 meters.
- Quality motor runs for 5000 hours continuously without any defects.
- Multiple unit specification: 1000mm, 1200mm, 1500mm
- Various installation heights available: 5m, 6m, 7m, 8m



GULFSTARS.LLC

# COMMERCIAL AIR CURTAINS

Commercial Air Curtains are used for a height of 3.5 meters to 4.5 Meters with this sizes 900mm, 1200mm, 1500mm

## Features of Noorah Commercial Air Curtains

- Metal casing, strong fire resistance, simple installation and easy cleaning
- Quality motor runs for 5000 hours continuously without any defects.
- Multiple unit specification: 1000mm, 1200mm Various installation heights available: 5m, 6m, 7m, 8mm, 1500mm



# WING AIR CURTAINS



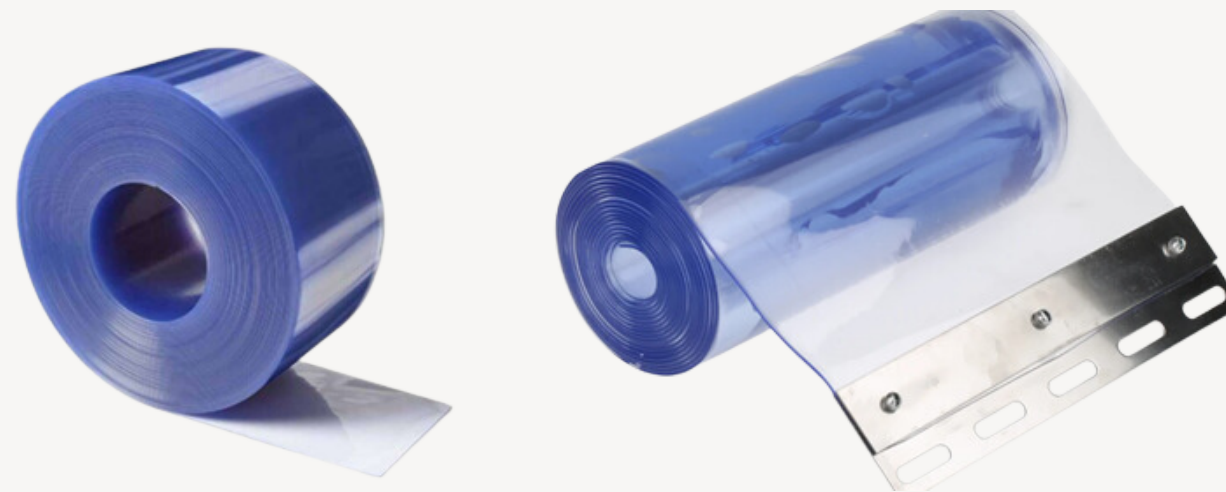


GULFSTARS.LLC

# PVC STRIP CURTAINS

PVC Strip curtain is the most economical system for separating any kind of location such as high humidity or low temperature zones. Its easy installation, simple handling and low maintenance make it suitable in every space and widely accepted. GS provides one of the most soft and high quality of PVC strip curtains with galvanized hangers and Stainless-Steel Hangers. We provide supply and installation of customized size.

- Standard PVC strips are available for small and medium size of Doors
- Width: 200mm
- Thickness: 1.8 or 2mm
- For Large and industrial or factory locations, below size is also available
- Width: 400mm
- Thickness: 4mm



+966 58 322 9921



support@gulfstars.llc



www.gulfstars.llc



GULFSTARS.LLC

# FRAMED FOLDING DOORS

- Highest quality suiting your environment.
- Double glazed glass.
- Heavy duty accessories in black and silver anodized finish.
- Airtight.
- Bar close (Glass Beading) shutter.
- Inside or Outside opening.
- Heavy duty with top and bottom weight capacity.
- Movable corners.
- Bottom tracks visible and concealed.



+966 58 322 9921



support@gulfstars.llc



www.gulfstars.llc



GULFSTARS.LLC

# GS FRAMED FOLDING DOORS

## Technical Performance:

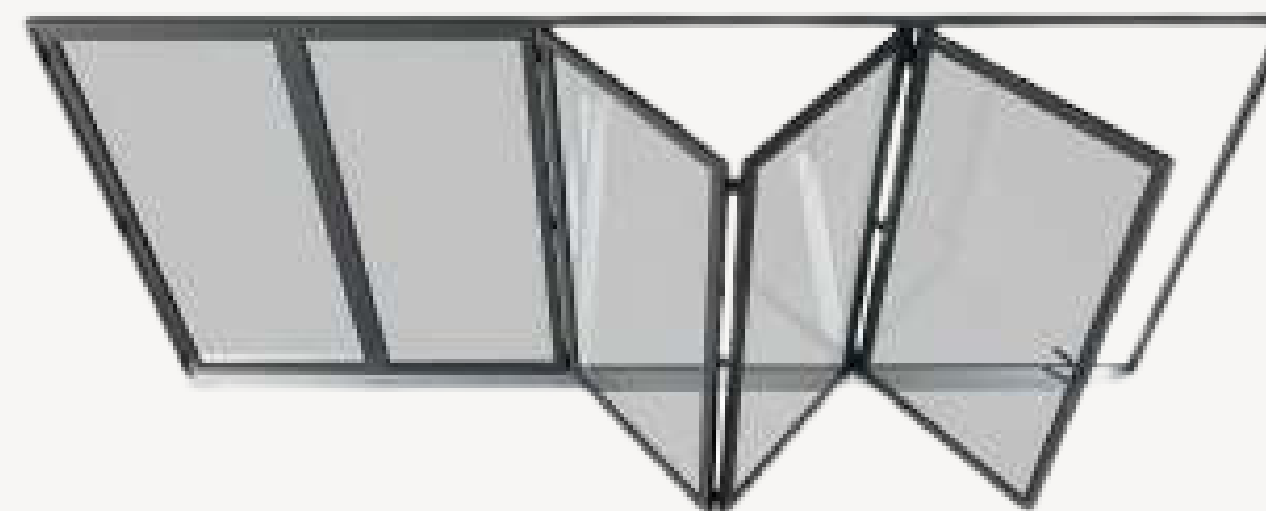
- U Value 1.5W/m<sup>2</sup>K using a 1.0 center pane
- Air Class 2, 450Pa
- Water Class 8A, 450Pa
- Wind Class 3, 1200Pa
- Document L Compliant

## Design Limitations:

- Maximum panel width less than 3000mm : 750mm - 800mm
- Maximum panel width more than 3000mm : 700mm - 750mm
- Maximum panel height with Transom profile : 4000mm
- Maximum panel height without Transom profile : 3500mm

## Double Glazed Glass Specifications :

- 24mm ( 6mm Glass + 12mm Air Spacer + 6mm Glass )
- 32mm ( 6mm Glass + 20mm Air Spacer + 6mm Glass )



+966 58 322 9921



support@gulfstars.llc

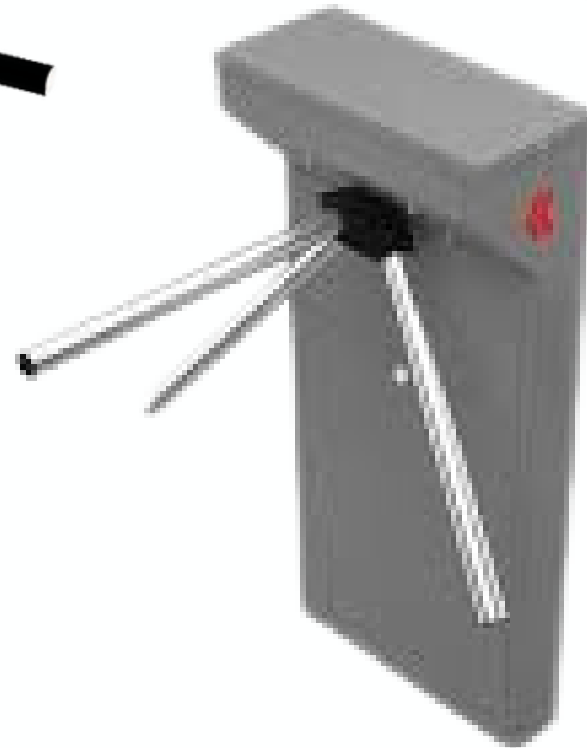
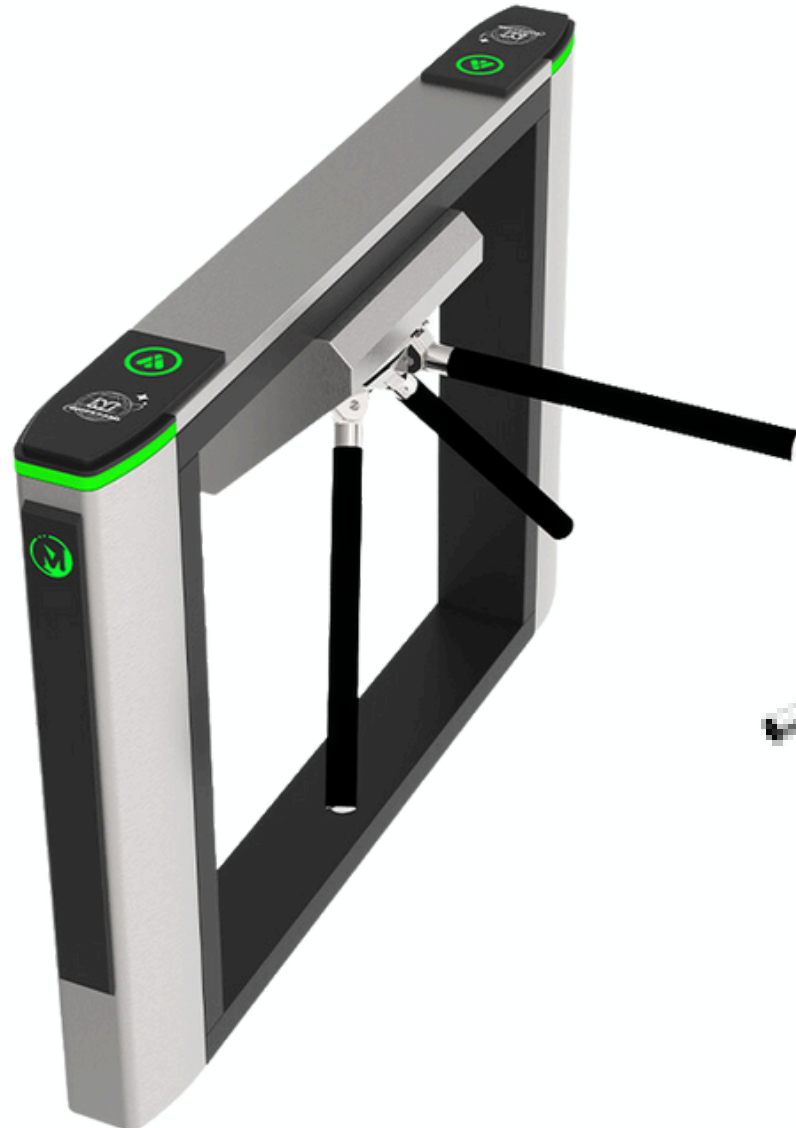


www.gulfstars.llc



GULFSTARS.LLC

# TURNSTILES





GULFSTARS.LLC

# TURNSTILE

Can be configured to enforce one-way human traffic and control entrance, authenticate tickets and boarding cards, and manage access for both workers and visitors. The majority of pedestrian turnstiles and speed gates include built-in electronics, and anti-panic functionality, and are compatible with all conventional access control management software. Offices and administrative buildings, industrial premises, research institutions, public authorities, bank, airports, railway stations, cricket stadiums, swimming pools, and theme parks can all benefit from the variety of design, shape, and finish options.

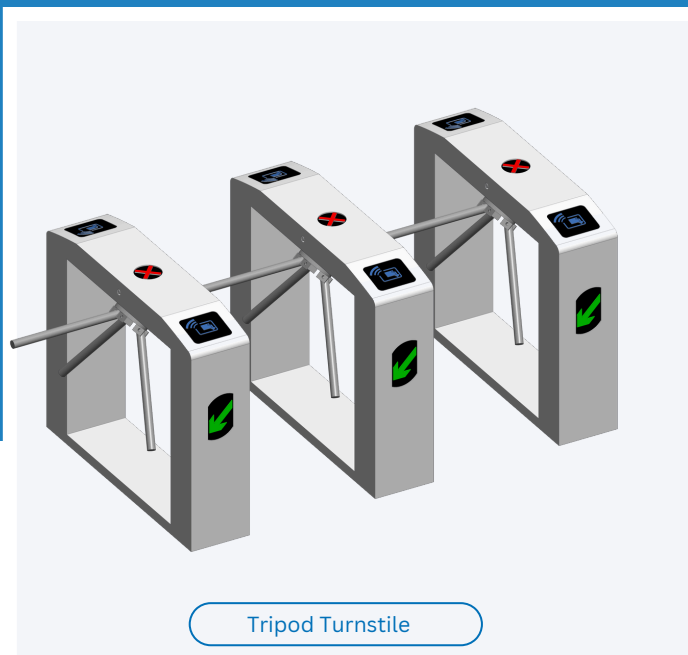


# E GATES/ TURNSTILES

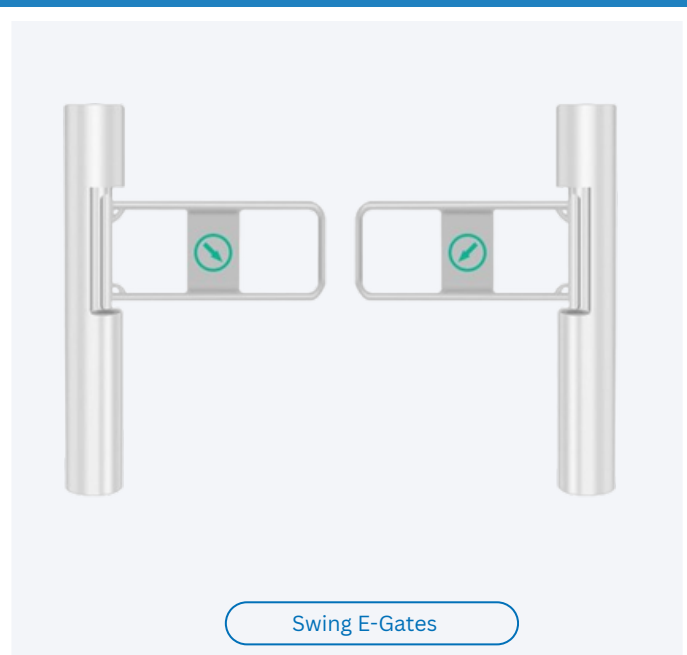
We offer a variety of high-quality E-Gates, including speed swing gates, turnstiles, tripods, and full-height turnstiles, all designed for industrial use. These E-Gates are ideal for enhancing security and controlling access in diverse settings such as manufacturing facilities, warehouses, distribution centers, and high-traffic commercial spaces.



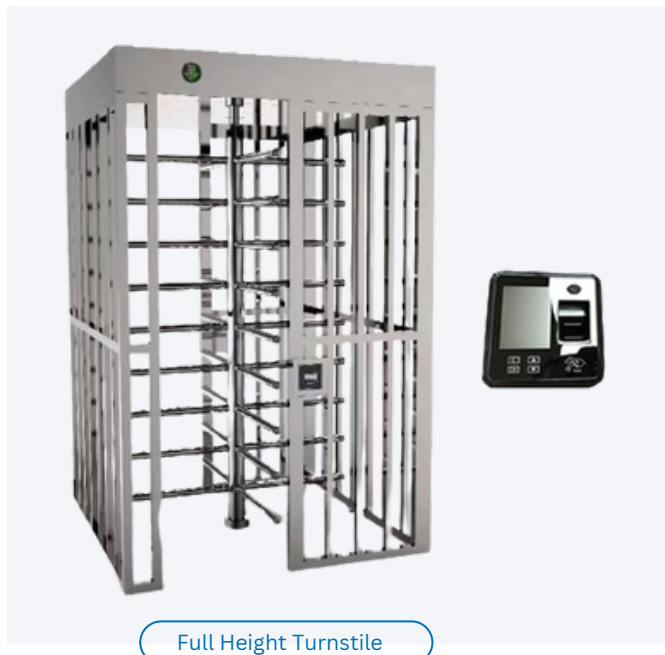
Swing E-Gates



Tripod Turnstile



Swing E-Gates



Full Height Turnstile



Tripod Turnstile



Tripod Turnstile (Swing)



GULFSTARS.LLC

# SAFETY ACCESSORIES

## HAND RAILS, WHEEL GUIDES, SAFETY BOLLARDS

- We are specialized in providing complete safety rails for Offices stairs, buildings and ware house loading areas. We offer the below categories and more.
- Stainless Steel hand Rails for Office Stairs
- and Roof Railings
- Steel Wheel Guides for Loading and unloading Areas
- Safety Fence (Hand Rails) for isolating passage area for Staff.
- Moreover we can design and suggest customized safety Rails.



+966 58 322 9921



support@gulfstars.llc



www.gulfstars.llc



# SAFETY ACCESSORIES

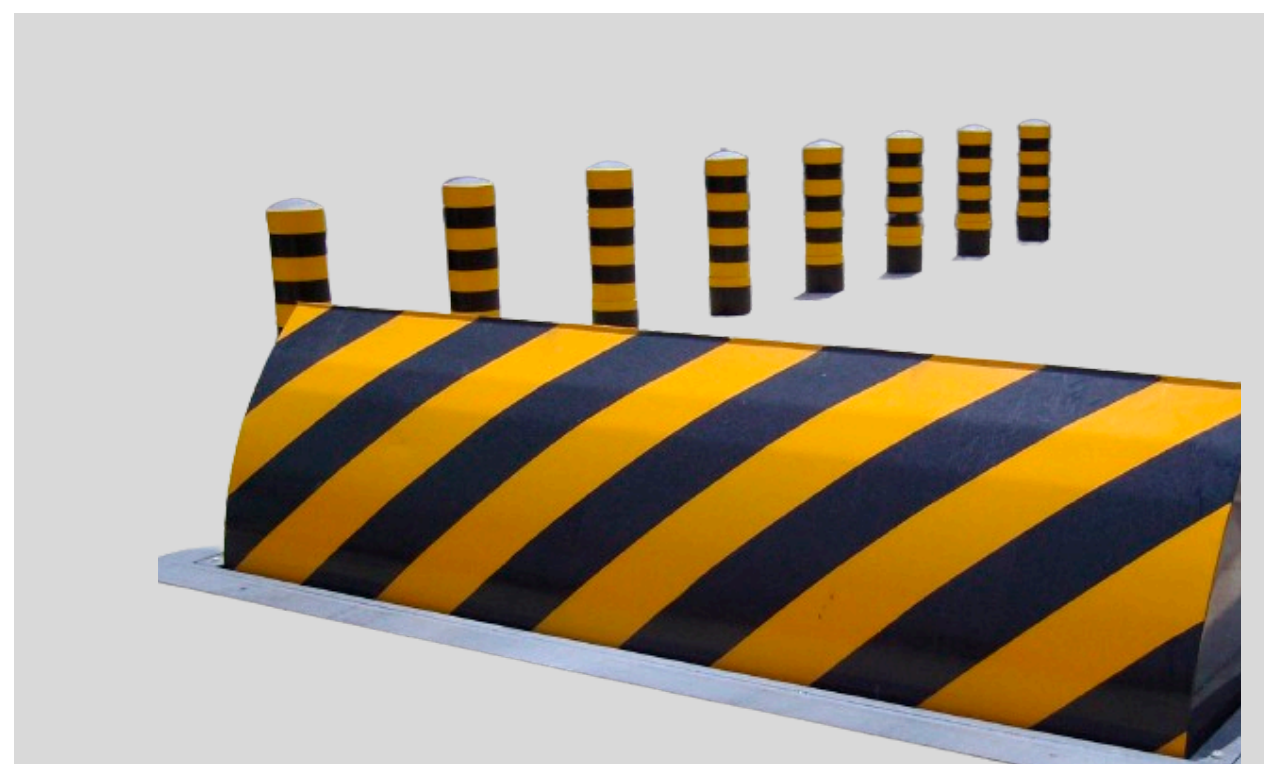
(WHEEL GUIDES, SECURITY FENCING, BOLLARDS, & BARRIERS)



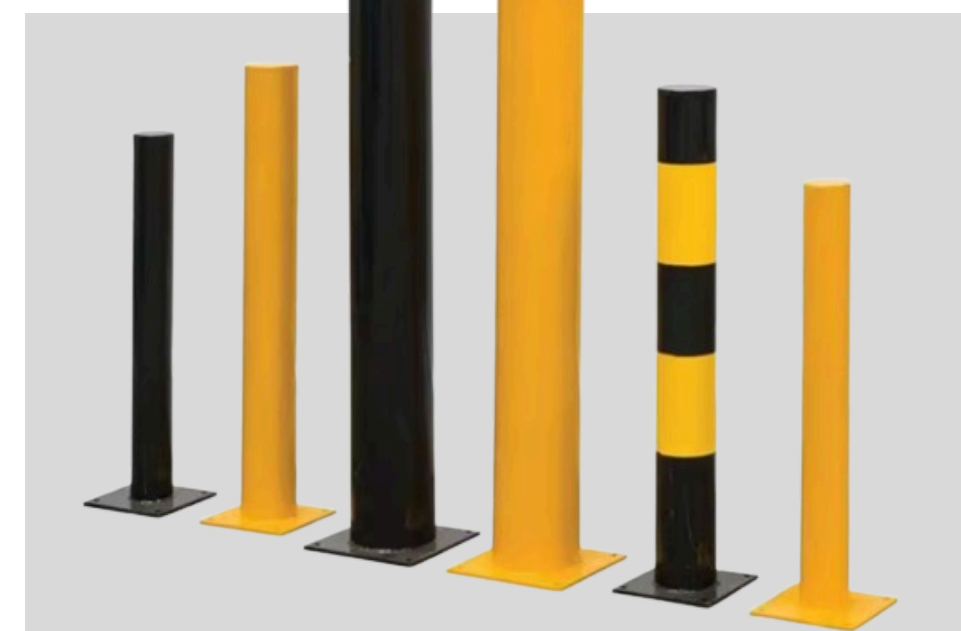
WHEEL GUIDES



ROUND TUBE RAIL BARRIERS



ROAD BLOCKERS



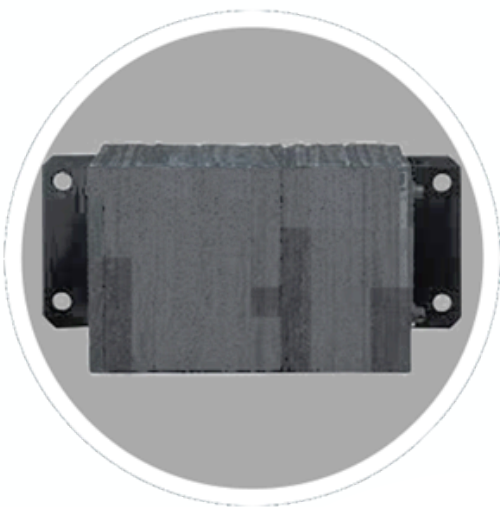
CAR PARKING BARRIERS



HYDRAULIC RISING BOLLARD



GULFSTARS.LLC





GULFSTARS.LLC

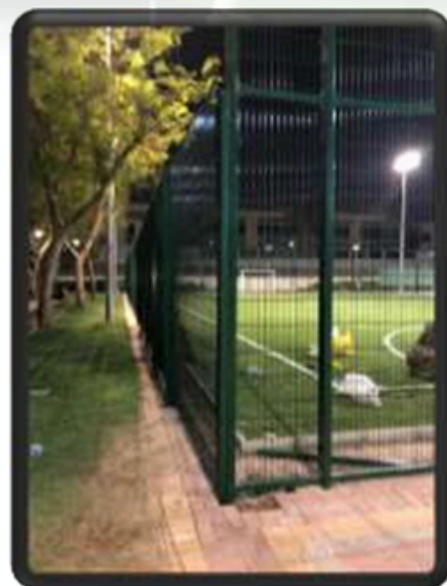
## WIRE MESH RAILING

Our railing System provides a simple yet timeless look. The system consists of round tubular posts and the railing in-fill between the posts is mounted via fixed point holders. GS wire mesh infill features an organic, interwoven fabric as an infill. Mesh infills are timeless and easy to maintain. The signature box frame completes the system for a clean, sharp look. Available in a wide range of standard designs, with options of custom design and materials.





GULFSTARS.LLC



# Exclusive Dealers

*We strive to find the best for you!!!*

Exclusive Dealership for  
Doors, Dock Levelers and Dock Shelters

Fire Rated Roller Shutters



# Our principals

*We strive to find the best for you!!!*

BMP High Speed Doors-Italy



FAAC-Italy

Nice

FAAC-Italy

FAAC

FAAC-Italy

**BENINCA**<sup>®</sup>  
TECHNOLOGY TO OPEN

SOMMER-Germany

**SOMMER**

ACM-Italy



CAME-Italy

**CAME**

For Air Curtains we have

VTS -Poland



NOORAH AIR CURTAINS-China

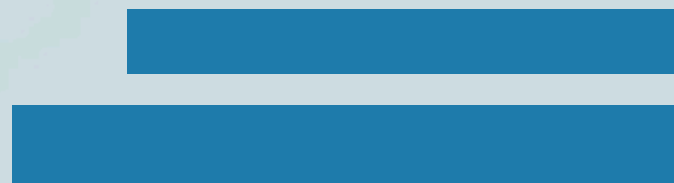




GULFSTARS.LLC



# *Our Accomplishments*



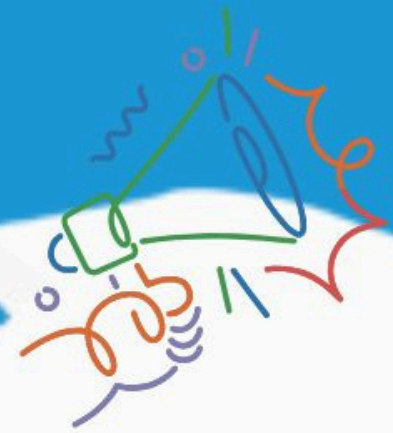


GULFSTARS.LLC



Date	Projects	Address		QTY
11/19/2024	National Automobile Manufacturing Company	Jeddah	Dock Levelers/Dock Shelters/Dock House/ Wheel Guides/Vehicle Hooker Restraint/DB	5 each
11/18/2024	Al Ahssan Trading Company LLC	Riyadh	Sectional Doors / Dock Levelers	4 each
11/17/2024	Saudi Global Ports Co. LLC	Dammam	Roller Shutters (RS)/ Dock Shelter (DS)/ Sandwich Panels (SP)/ Steel Barriers (SB)/	RS=20+14+6/ DS= 14+14/ SP= 180/ SB= 57+11
10/30/2024	Green Point Contracting Company	Riyadh	Sectional Doors / Dock Levelers	4 each
10/14/2024	The First Swaie Logistic Services Co	Jeddah	Sectional Doors / Dock Levelers/Dock Shelter	4 each
10/10/2024	Consolidated Contractors Company (CCC)	Riyadh	Roller Shutters/Fire rated/ insulated/ Automatic and Manual Roller shutter/ Acoustic Shutter	Total 16
9/30/2024	Agricultural Development Co. – Tanmiah	Riyadh	WING Air Curtains	33
9/25/2024	Crover Company Ltd.	Riyadh	Roller Shutters	21
9/15/2024	EFSIM Facilities Management Company	Riyadh	Revolving Doors & Telescopic Glass Sliding Doors	4 each
9/03/2024	Facilities Management Company (FMCO)	Tabuk	PVC high Speed Door	4
9/2/2024	TAMIMI Pre-Engineered Buildings Factory Co.	Dammam	Roller Shutters	8
8/29/2024	Saudi Icon	Riyadh	Gate Barriers	8
8/26/2024	Kitab Hussain Al-Shammary Company	Riyadh	Dock Levelers	12
11/29/2024	Arabian Metal Industries	Jeddah	Truck Doors	56
8/05/2024	Cooling Systems Trading Company	Riyadh	Dock Shelters, Dock Levelers and Sectional Doors	6 each
8/04/2024	Facilities Management Company (FMCO)	Tabuk	Gate Barriers	8
8/04/2024	National Blue Co. Ltd. General Contracting	Al Jubail	Double Leaf Telescopic Sliding Gate	2
7/11/2024	Oil Chemistry Industrial Company	Dammam	Full Height Turnstiles	2
7/11/2024	Riyadh Cement Co. (RCC)	Riyadh	CAME GATE BARRIER	4

Date	Projects	Address		QTY
7/17/2024	TAMIMI Pre-Engineered Buildings Factory Co.	Dammam	Roller Shutters	28
6/4/2024	Najawi Trading Est.	Dammam	Sectional Doors / Dock Levelers	5 each
6/1/2024	Kitab Hussain Al-Shammary Company	Riyadh	Dock Levelers	27
5/6/2024	Arabian Metal Industries	Jeddah	Aluminium Roller Shutters	116
2/21/2024	National Food company -Meat division	Jeddah	Sectional Doors	7
2/21/2024	National Food company -Meat division	Jeddah	Dock Levelers	3
2/21/2024	National Food company -Meat division	Jeddah	PVC High Speed Doors	8
2/12/2024	Saudi Icon	Riyadh	Roller Shutters	6
2/12/2024	Saudi Icon	Riyadh	Sectional Doors	26
2/6/2024	Namma Cargo Services Co. LTD.	Riyadh	Dock Levelers	18
2/6/2024	Namma Cargo Services Co. LTD.	Riyadh	Dock Shelters	18
1/10/2024	Easy Tech	Riyadh	Sliding Gates	11
11/29/2023	Advanced Construction Company	Riyadh	Roller Shutters	16
11/29/2023	Advanced Construction Company	Riyadh	Dock Levelers	6
11/29/2023	Advanced Construction Company	Riyadh	Dock Shelters	6
7/9/2023	Eastern Province Cement Company	Dammam	Roller Shutters	7
1/25/2023	Ebtekar Al Memar Contracting Company	Riyadh	Dock Levelers	5
1/25/2023	Ebtekar Al Memar Contracting Company	Riyadh	Sectional Doors	5
6/16/2022	TAMIMI MARKETS COMPANY (LLC)	Al Khobar	Sectional Doors	4
6/16/2022	TAMIMI MARKETS COMPANY (LLC)	Al Khobar	Dock Leveler	4
6/16/2022	TAMIMI MARKETS COMPANY (LLC)	Al Khobar	Dock Shelter	4
6/16/2022	TAMIMI MARKETS COMPANY (LLC)	Al Khobar	Vertical Swing Turnstile	20
6/9/2022	CREET International Contracting Company LTD.	Jeddah	Edge Dock leveler	28
5/30/2022	AL FARES INTERNATIONAL TENTS	Riyadh	Glass Folding Doors W30,000*H4000mm	1
5/8/2022	Agricultural Development Co. - Tanmiah	Riyadh	Dock Levelers	15
5/8/2022	Agricultural Development Co. - Tanmiah	Riyadh	Sectional Doors	15
5/8/2022	Agricultural Development Co. - Tanmiah	Riyadh	Dock Shelter	15
3/30/2022	Naqel Express	Jeddah	Dock Leveler	8
3/30/2022	Naqel Express	Jeddah	Sectional Doors	8
12/21/2021	GULF CATERING FOOD FACTORY	Riyadh	Sectional Doors	19
12/21/2021	GULF CATERING FOOD FACTORY	Riyadh	Dock Leveler	9
11/7/2021	El Seif Contracting Co.	Riyadh	Dock Leveler	6
7/12/2021	SAB Group	Jeddah	Sectional Doors	3
7/12/2021	SAB Group	Jeddah	Dock Leveler	3



**ANNOUNCEMENT!**

**GULF STARS**



**IS NOW A PROUD VENDOR  
FOR**

**ارامكو السعودية  
Saudi Aramco**



**VENDOR  
REGISTERED**

**Vendor ID: 10113467**



GULFSTARS.LLC



Saudi Aramco E-Reference No. 0010117

## Registration Approval Letter

July 31, 2024

**Attention :** GULF STARS FOR AUTOMATIC DOORS COMPANY.

**CR Number :** 1010765680

**Supplier Type:** Materials Vendor + Service Provider

**Country :** Saudi Arabia

We are pleased to inform you that GULF STARS FOR AUTOMATIC DOORS COMPANY. is now registered in the Saudi Aramco Supplier Management System under Vendor Code No. 10113467, provided your company continues to meet all relevant Saudi Arabian and Saudi Aramco standards.

This registration, however, should not be construed as a commitment by Saudi Aramco to procure from you. Being registered as a supplier only grants your company the opportunity, along with other registered sources, to respond to requests for submitting proposals in accordance with Saudi Aramco's established policies and procedures. All procurement instruments including but not limited to service contracts, purchase agreements, or purchase orders will be issued based on the name and address included in your commercial registration (CR), as stated in your Supplier Registration.

Saudi Aramco wishes to remind you that being recognized as a supplier carries with it serious obligations and responsibilities to act in a legal and ethical manner. We wish to remind you of the Saudi Aramco Supplier Code of Conduct (SCOC) which you acknowledged. Failure to abide by the principles set forth in the SCOC can result in adverse actions being taken by Saudi Aramco against you including suspension of you as a supplier. Saudi Aramco also expects each of its suppliers to satisfy each of the requirements of any procurement instrument which might be placed and to act responsibly and reliably as a supply chain supplier.

Material Suppliers should apply for Saudi Aramco Supplier Portal access by forwarding a request to [portal-registration@aramco.com](mailto:portal-registration@aramco.com). The Supplier Portal is the main electronic business tool used between Saudi Aramco and its suppliers and serves to improve the flow and accuracy of key supply chain information.

For further information or assistance please contact the Saudi Aramco Supplier Help Desk by forwarding a request to [SupplierHelpDesk@aramco.com](mailto:SupplierHelpDesk@aramco.com) or via the unified call center 800-116-1168 for In-Kingdom suppliers or +966 (11) 290-8950 for Out-of-Kingdom suppliers.

Faisal Hamad Al Dossary, Supervisor  
**Supplier Registration Unit**  
**Supplier Relationship Management Div**

It is the responsibility of the supplier to update Saudi Aramco Supplier Registration Profile through Ariba for the following:

1. Change of Name / Commercial Registration Number / Address / Owner(s)
2. Any change of the supplier location
3. Discontinue supply of approved commodities (9COMs and 9CATS)

This is an electronically generated letter by Saudi Aramco. To verify Supplier approval status, please contact Supplier Help Desk at [supplierhelpdesk@aramco.com](mailto:supplierhelpdesk@aramco.com)

## Certificate of Registration



This is to certify that  
the Quality Management System of

### **GULF STARS FOR AUTOMATIC DOORS LLC**

Prince Fahad Bin Ibrahim Al Saud Street, Al Malaz,  
Riyadh, Kingdom of Saudi Arabia.

Has been independently assessed and is compliant with the requirements of

## **ISO 9001:2015**

(Quality Management System)

This Certificate is applicable to the following product or services ranges:

Trading, Supply & Installation of Doors, Windows, Industrial Equipment, Electronics, Communication Devices, Office Machines, Military Control Systems, Computers & Computer Accessories, Printers, Communication Equipment, Electronic Parts, Circuits, Traffic Safety Devices, Equipment for Industrial Security, Construction Machinery & Equipment, Metal Roofs, Custom Software, Decorative Products, Ceilings, Insulation, Building Materials & Factory Equipment.

**CERTIFICATE NO: AE 1000461/01/Q**

Date of this Certificate 08 JUL 2024 Date of Initial Registration 08 JUL 2024

Date of Certificate Expiry 07 JUL 2025 Re-certification Due 07 JUL 2027



Director



Issue No.01



This certificate is property Of LEMS and remains valid subject to satisfactory surveillance audits. Certified organization is responsible for maintaining the compliance of relevant standard rules. Any significant changes in the scope of the certification or standard referred above renders this certificate invalid.

### **LEMS QUALITY & STANDARDIZATION CERTIFICATES ISSUING SERVICES**

[www.lemscert.com](http://www.lemscert.com)

Dubai, United Arab Emirates.

LEMS has been assessed by accreditation service for certification bodies LLC (ASCB) , 8 The Green, Dover, DE,19901, United States as a certifying body for compliance with ISO 17021:2015 conformity assessment. This certificate can be verified on [www.lemscert.com](http://www.lemscert.com)

## Certificate of Registration

**LEMS**  
CERTIFICATIONS

This is to certify that  
the Environment Management System of

### **GULF STARS FOR AUTOMATIC DOORS LLC**

Prince Fahad Bin Ibrahim Al Saud Street, Al Malaz,  
Riyadh, Kingdom of Saudi Arabia.

Has been independently assessed and is compliant with the requirements of

## **ISO 14001:2015**

(Environmental Management System)

This Certificate is applicable to the following product or services ranges:

Trading, Supply & Installation of Doors, Windows, Industrial Equipment, Electronics, Communication Devices, Office Machines, Military Control Systems, Computers & Computer Accessories, Printers, Communication Equipment, Electronic Parts, Circuits, Traffic Safety Devices, Equipment for Industrial Security, Construction Machinery & Equipment, Metal Roofs, Custom Software, Decorative Products, Ceilings, Insulation, Building Materials & Factory Equipment.

**CERTIFICATE NO: AE 1000461/02/E**

Date of this Certificate 08 JUL 2024 Date of Initial Registration 08 JUL 2024

Date of Certificate Expiry 07 JUL 2025 Re-certification Due 07 JUL 2027



Director



Issue No.01



This certificate is property Of LEMS and remains valid subject to satisfactory surveillance audits. Certified organization is responsible for maintaining the compliance of relevant standard rules. Any significant changes in the scope of the certification or standard referred above renders this certificate invalid.

### **LEMS QUALITY & STANDARDIZATION CERTIFICATES ISSUING SERVICES**

[www.lemscert.com](http://www.lemscert.com)

Dubai, United Arab Emirates.

LEMS has been assessed by accreditation service for certification bodies LLC (ASCB) , 8 The Green, Dover, DE,19901, United States as a certifying body for compliance with ISO 17021:2015 conformity assessment. This certificate can be verified on [www.lemscert.com](http://www.lemscert.com)

## Certificate of Registration



This is to certify that  
the Occupational Health & Safety Management System of

### GULF STARS FOR AUTOMATIC DOORS LLC

Prince Fahad Bin Ibrahim Al Saud Street, Al Malaz,  
Riyadh, Kingdom of Saudi Arabia.

Has been independently assessed and is compliant with the requirements of

## ISO 45001:2018

(Occupational Health & Safety Management System)

This Certificate is applicable to the following product or services ranges:

Trading, Supply & Installation of Doors, Windows, Industrial Equipment, Electronics,  
Communication Devices, Office Machines, Military Control Systems, Computers & Computer  
Accessories, Printers, Communication Equipment, Electronic Parts, Circuits, Traffic Safety  
Devices, Equipment for Industrial Security, Construction Machinery & Equipment, Metal Roofs,  
Custom Software, Decorative Products, Ceilings, Insulation, Building Materials & Factory  
Equipment.

CERTIFICATE NO: AE 1000461/03/H

Date of this Certificate	08 JUL 2024	Date of Initial Registration	08 JUL 2024
Date of Certificate Expiry	07 JUL 2025	Re-certification Due	07 JUL 2027



Director



This certificate is property Of LEMS and remains valid subject to satisfactory surveillance audits. Certified organization is responsible for maintaining the compliance of relevant standard rules. Any significant changes in the scope of the certification or standard referred above renders this certificate invalid.

### LEMS QUALITY & STANDARDIZATION CERTIFICATES ISSUING SERVICES

[www.lemscert.com](http://www.lemscert.com)

Dubai, United Arab Emirates.

LEMS has been assessed by accreditation service for certification bodies LLC (ASCB) , 8 The Green, Dover, DE,19901, United States as a certifying body for compliance with ISO 17021:2015 conformity assessment. This certificate can be verified on [www.lemscert.com](http://www.lemscert.com)



GULFSTARS.LLC

التاريخ ١٤٤٥/١٢/٢٤  
الموافق ٣٠/٠٦/٢٠٢٤  
رمز الشهادة ٦٧٦٤٦٥٤٢



## شهادة

إسم المنشأة : شركة نجوم الخليج للابواب الاوتوماتيكية

الرياض

السعودية

رقم الاشتراك : ٦٢٧.٩٥٨.٥

رقم السجل التجاري: ١٠١٠٧٦٥٦٨٠

رقما	كتابة	عدد المشتركين السعوديين
٦	سنة مشتركين	عدد المشتركين غير السعوديين
١٥	خمسة عشره مشتركا	المجموع
٢١	واحد و عشرون مشتركا	

تشهد المؤسسة العامة للتأمينات الاجتماعية بأن المنشأة المذكورة أعلاه قد أوفت بالتزاماتها تجاه المؤسسة وفق البيانات المقدمة منها حتى تاريخ إصدار هذه الشهادة ، والتي تم منحها لتقديمها لأية جهة تطلبها ، وهي صالحة لجميع الأغراض التي نص عليها نظام التأمينات الاجتماعية في المادة (١٩/٦) منه.

هذه الشهادة سارية المفعول حتى ١٤٤٦/٠١/٢٣ هـ.

يلزم التحقق من صحة وصلاحيه الشهادة عبر زيارة الرابط  
أدناه في الموقع الإلكتروني للمؤسسة العامة للتأمينات الاجتماعية  
أو عن طريق استخدام  
الرمز المعرف التالي :



[www.gosi.gov.sa/vc](http://www.gosi.gov.sa/vc)

( الشهادة معتمدة من صاحب الصلاحية ولا تحتاج إلى توقيع أو ختم )

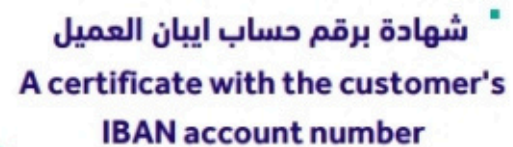
ننهادة

[www.gosi.gov.sa](http://www.gosi.gov.sa)  
800 1243344



تعد هذه الشهادة من الوثائق الإلكترونية الحكومية الرسمية ، ويخطر قطعا تقليدها أو إدخال أي تعديلات عليها سواء بالإضافة أو الحذف أو التغيير في بياناتها أو غير ذلك من أنواع التعديل ، وتعد الشهادة لاغية إذا شابها شيء من ذلك ، كما تعرض صاحبها للملاحقة النظامية أمام الجهات المختصة بالإضافة إلى مايفرضه نظام التأمينات الاجتماعية من عقوبات ، ولايجوز تداول الشهادة إلا في الأغراض التي أصدرت لأجلها وفقا لأحكام نظام التأمينات الاجتماعية ، والمؤسسة العامة للتأمينات الاجتماعية غير مسؤولة عن أي آثار أخرى مترتبة قبل الغير عن الشهادة وغير مسؤولة عن أي عملية تزوير أو تعديل تتم على البيانات الواردة فيها .





التاريخ: 2024/10/10

Date: 10/10/2024

السادة / المحترمين

بعد التحية.. نفيديكم أن السيد / السيدة / الأنسة : شركة نجوم الخليج للأبواب والابواب

To Whom it May Concern,

شركة نجوم الخليج للابواب والاثاث

At his request below is this account no.without any liability or obligation on the bank:

وبناءً على طلبه تجدون أدناه رقم حسابه أدناه بدون أدنى مسؤولية أو التزام على البنك.

رقم الحساب الجاري  
Current Account No.

2	3	5	3	0	8	6	6	3	9	9	4	0
---	---	---	---	---	---	---	---	---	---	---	---	---

رقم الحساب الموحد (الآيبان)  
Consolidate Account No. (IBAN)

S	A	0	8	2	0	0	0	0	0	0	2	3	5	3	0	8	6	6	3	9	9	4	0
---	---	---	---	---	---	---	---	---	---	---	---	---	---	---	---	---	---	---	---	---	---	---	---

بيانات العميل الشخصية  
Customer Personal

GULF STARS CO

الاسم  
Name

7027030183

السجل التجاري  
CR No.

SAUDI ARABIA ٤٤٢٥ ص. ب.

العنوان  
Address

+966534840319

رقم لهاتف  
Tel No.

التوقيع  
Signature

Reference Number:  
2-26203975169

رقم المرجع:  
2-26203975169



ختم الكتروني  
Digital Stamp



صلاحيه توثيق، البيانات The Vaildity of the Data Authentication



تاريخ الإصدار: 2021/12/28  
الرقم المميز: 3111331257



الهيئة العامة للزكاة والدخل  
General Authority of Zakat & Tax



## شهادة تسجيل في ضريبة القيمة المضافة VAT Registration Certificate

تشهد الهيئة العامة للزكاة والدخل بأن المكلّف أدناه مسجل في ضريبة القيمة المضافة بتاريخ 2021/12/28

Hereby, The General Authority of Zakat & Tax (GAZT) certifies that the taxpayer below is VAT registered on 28/12/2021

اسم المكلّف: شركة نجوم الخليج للابواب الاوتوماتيكية  
Taxpayer Name:  
رقم التسجيل الضريبي: 311133125700003  
VAT Registration Number:  
تاريخ نفاذ التسجيل: 2022/01/01  
Effective Registration Date:  
عنوان المكلّف: الرياض، حي المصيف، الطريق الدائري الشمالي، 12467  
Taxpayer Address:



كمكلف مسجل في ضريبة القيمة المضافة، لا يجوز لك تحصيل ضريبة القيمة المضافة من عملائك قبل تاريخ نفاذ التسجيل بالضريبة. في حال تبين غير ذلك، ستقوم الهيئة العامة للزكاة والدخل بتنفيذ الغرامات المستحقة

هذه الوثيقة مرسلة من النظام الآلي ولا تحتاج إلى توقيع  
- الهيئة العامة للزكاة والدخل -



الرقم المميز: ٣١١١٣٣١٢٥٧  
TIN  
رقم الشهادة: ١٠٣٣١٩٨٦  
Certificate No.  
تاريخ الاصدار: ١٤٤٥/١٢/٢٤  
Issue Date



هيئة الزكاة والضريبة والجمارك  
Zakat, Tax and Customs Authority

المملكة العربية السعودية  
Kingdom of Saudi Arabia

## شهادة Certificate

The Zakat, Tax and Customs  
Authority certifies that the Taxpayer

تشهد هيئة الزكاة والضريبة  
والجمارك أن المكلّف /

شركة نجوم الخليج للابواب الاوتوماتيكية

Entity Unified No. /ID No.

٧٠٢٧٠٣٠١٨٣

الرقم الموحد للمنشأة / رقم هوية

Commercial Registration/License/  
Contract No

١٠١٠٧٦٥٦٨٠

سجل تجاري / رخصة / عقد رقم

Has submitted his tax return for the period ending on 31/12/2023 AD, and he was granted the certificate to complete all his transactions including the payment of the final amount due on the contract.

قدم إقراره عن الفترة المنتهية في ١٨/١٢/١٤٤٥ هـ. وقد منح هذه الشهادة لإنهاء جميع معاملاته بما في ذلك صرف مستحقاته النهائية عن العقود.

The Certificate is valid until 02/11/1446 AH corresponding to 30/04/2025 AD

يسري مفعول هذه الشهادة حتى تاريخ ٢٠٢٥/٠٤/٣٠ الموافق ١٤٤٦/١١/٠٢ هـ الموافق

( The second of Dhu al-Qi'dah one thousand four hundred forty-six Hijri )

( الثاني من ذو القعدة ألف و أربعمئة و ستة و أربعون هجري )

لا يعتد بهذه الشهادة إلا بعد التحقق من موقع الهيئة الإلكتروني: [www.zatca.gov.sa](http://www.zatca.gov.sa)

This certificate is not valid until verified by the Authority's Website: [www.zatca.gov.sa](http://www.zatca.gov.sa)

zatca.gov.sa

19993

@zatca\_\_sa



هذه الوثيقة مستخرجة من النظام الآلي ولا تحتاج إلى توقيع ولا يعتد بهذه الشهادة إلا بعد التحقق من موقع الهيئة [www.zatca.gov.sa](http://www.zatca.gov.sa)



ترخيص استثمار تجاري  
Trading Investment License

رقم المنشأة (671621)  
رقم الترخيص (102064304115860)  
تاريخ الإصدار تاريخ الانتهاء  
1443/04/15 هـ 1446/04/11 هـ  
2021/11/21 م 2024/10/15 م



المركز الرئيسي

حالة الترخيص: تعديل

اسم الترخيص شركة نجوم الخليج للابواب الاتوماتيكية

الكيان القانوني شركة شخص واحد ذات مسؤولية محدودة

الموقع الرياض رأس المال (30,000,000) ريال سعودي

اسم صاحب/ أصحاب الترخيص	رقم المستثمر الجنسية	الحصة	اسم صاحب/ أصحاب الترخيص	رقم المستثمر الجنسية	الحصة
كوستوديان للابواب الآلية ش ذ م م	671622	100%	الإمارات العربية المتحدة		

CUSTODIAN AUTOMATIC DOOR

النشاط:

461017:وكلاء البيع للألات بما في ذلك الألات المكتبية والحواسيب والمعدات الصناعية

461072:توريد الإلكترونيات وأجهزة الاتصالات وأنظمة القيادة والتوجيه والتحكم العسكرية

465101:البيع بالجملة للحواسيب ومستلزماتها ، يشمل (بيع الطابعات وأخبارها)

465201:البيع بالجملة لقطع غيار المعدات والأجزاء الإلكترونية الخاصة بالاتصالات ، يشمل ( بيع الأنابيب الإلكترونية والدوائر الكهربائية المدمجة والمطبوعة )

465935:البيع بالجملة لأجهزة السلامة المرورية

465993:البيع بالجملة لألات ومعدات التشييد والبناء والهندسة المدنية

465996:البيع بالجملة لقطع غيار معدات وآلات البناء

466370:البيع بالجملة لاسقف الصناعية المعدنية والابواب والشبابيك والمصنوعات المعدنية

474152:بيع البرمجيات غير المعدة بناء على الطلب

475150:البيع بالتجزئة للخيام

تاريخ الطباعة 1445/10/28 هـ

يمكنك التحقق من صحة وصلاحيّة الشهادة عبر زيارة الرابط  
<https://investsaudi.sa/en/verify> على موقع وزارة الاستثمار.





## رخصة نشاط تجاري Commercial Activity Licence شركة نجوم الخليج للابواب الاوتوماتيكية

رقم الرخصة الموحّد	License Number	تاريخ نهاية الترخيص	License Expiry Date
450714491508		1446/07/08	

اسم المالك	Owner's Name
شركة نجوم الخليج للابواب الاوتوماتيكية	

رقم هوية المالك	Owner's ID
7027030183 - 1010765680	

التصنيف الصناعي القياسي الدولي (نشاط ايزب)	ISIC Classification
تركيب وإصلاح وصيانة الابواب الاوتوماتيكية	

النشاط التفصيلي	Detailed Activity
تركيب وصيانة وبيع الابواب الاوتوماتيكية	

البلدية	Sub-Municipality	الأمانة	Municipality
بلدية الملز		أمانة منطقة الرياض	

الحي	District	الشارع	Street
الملز		الأمير فهد بن إبراهيم آل سعود	

مساحة المحل الإجمالية	Shop's Total Area	مساحة اللوحات الإجمالية	Shop's Sign's Area
133 متر مربع		1 متر مربع ارشادي   0 متر مربع اعلاني	



موقع المحل

للاطلاع على الأنشطة الإضافية وتفاصيل الرخصة يرجى مسح رمز الاستجابة السريع Code QR

التاريخ	Permits	رقم التصريح	Permit Number	تاريخ انتهاء التصريح	Permit Expiry Date



مركز الدعم الفني  
199040

Balady\_cs



saudimomra

www.balady.gov.sa



الرقم المميز	3111331257	TIN
رقم الشهادة	١٠٢٠٠٢١٨٦٤	Certificate No.
تاريخ الاشعار	١٤٤٤/١٠/٠٦ هـ	Issue Date



هيئة الزكاة والضريبة والجمارك  
Zakat, Tax and Customs Authority

المملكة العربية السعودية  
Kingdom of Saudi Arabia

## شهادة Certificate

The Zakat, Tax and Customs  
Authority certifies that the Taxpayer

تشهد هيئة الزكاة والضريبة  
والجمارك أن المكلّف /

شركة نجوم الخليج للابواب الاوتوماتيكية

Entity Unified No. /ID No.

٧٠٢٧٠٣٠١٨٣

الرقم الموحد للمنشأة / رقم هوية

Commercial Registration/License/  
Contract No

١٠١٠٧٦٥٦٨٠

سجل تجاري / رخصة / عقد رقم

Has submitted his tax return for the period ending on 31/12/2022 AD, and he was granted the certificate to complete all his transactions including the payment of the final amount due on the contract.

قدم إقراره عن الفترة المنتهية في ٧/١٠/١٤٤٤ هـ، وقد ملخ هذه الشهادة لإنهاء جميع معاملاته بما في ذلك صرف مستحقاته النهائية عن العقود.

The Certificate is valid until 21/10/1445 AH corresponding to 30/04/2024 AD

يسري مفعول هذه الشهادة حتى تاريخ ١١/١٠/١٤٤٥ هـ الموافق ٣٠/٠٤/٢٠٢٤ م

( The Twenty first of Shawwal one thousand four hundred forty-five Hijri ) ( الحادي والعشرون من شوال ألف وأربعمائة وخمسة وأربعون هجري )

لا يعتد بهذه الشهادة إلا بعد التحقق من موقع الهيئة الإلكتروني: [www.zatca.gov.sa](http://www.zatca.gov.sa)

This certificate is not valid until verified by the Authority's Website: [www.zatca.gov.sa](http://www.zatca.gov.sa)

zatca.gov.sa

19993

@zatca\_\_sa



هذه الوثيقة مستخرجة من النظام الآلي ولا تحتاج إلى توقيع ولا يعتد بهذه الشهادة إلا بعد التحقق من موقع الهيئة [www.zatca.gov.sa](http://www.zatca.gov.sa)

الرقم الموحد : ٧٠٢٧٠٣٠١٨٣  
رقم المنشأة : ١٠١٠٧٦٥٦٨٠  
التاريخ : ١٤٤٣/٠٥/١٢ هـ

شهادة تسجيل الشركة  
Company Registration Certificate

الاسم التجاري للشركة : شركة نجوم الخليج للابواب الاوتوماتيكية ( شخص واحد)  
نوعها : ذات مسئولية محدودة  
جنسيتها : سعودي  
مدة الشركة : ٩٩ سنة  
تبدأ من : ١٤٤٣/٠٥/١٢ هـ وتنتهي في : ١٥٤٢/٠٥/١٢ هـ  
مركزها الرئيسي : ٠١١١، ٠١١١  
هاتف : ٠٠٠٠٠٠٠٠٠٠  
الرمز البريدي : ٠٠٠٠٠  
ص.ب : ٠٠٠٠٠٠  
النشاط : للاطلاع على بيانات الأنشطة الرجاء مسح الرمز التجاري ملكية الشركة : خليجية  
رأس المال : ٣٠,٠٠٠,٠٠٠ ريال سعودي  
المديرون : 1 سيد محمد سعيد  
2  
3  
4  
5  
6  
7  
8  
9  
10  
11  
12  
13  
14  
15  
16  
سلطات المدير/المديرون : حسب ما نص عليه عقد الشركة  
يشهد مكتب السجل التجاري بمدينة الرياض : بأنه تم تسجيل الشركة المذكورة أعلاه بمدينة الرياض  
وتنتهي صلاحية الشهادات في : ١٤٤٧/٠٥/١٢ هـ بموجب الإيصال رقم : ٢٤٠٥٤٢٣٧٧٠٨١  
وتاريخ : ١٤٤٥/١١/٠٨ هـ

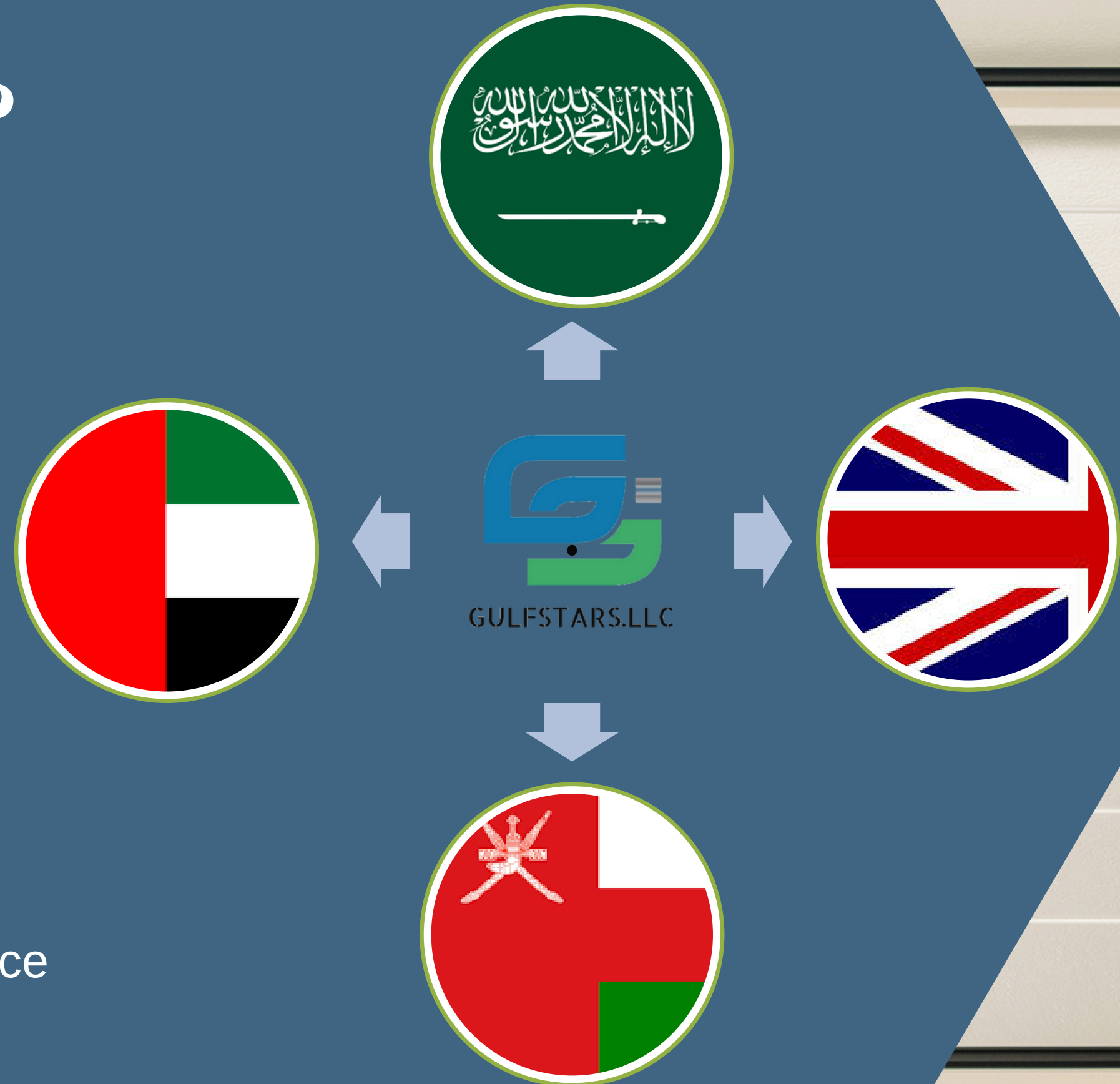


يمكنكم التحقق من صحة هذه الشهادة بالدخول على <http://qr.mc.gov.sa> To Verify The Information Of This Certificate Visit

www.mc.gov.sa MCgovSA @f t y o المملكة العربية السعودية | Kingdom of Saudi Arabia | الرياض 11162 | +966 11 294 4444

# Why choose us???

- 01 > Exceptional Customer Service.
- 02 > High Performance product
- 03 > Competitive Pricings
- 04 > After sales services
- 05 > Proven track record
- 06 > Personalized customer experience



*We serve the world!!!*



GULFSTARS.LLC





GULFSTARS.LLC



# OFFICES



Kingdom of Saudi Arabia

## Head Office

📍 Prince Fahad Ibn Ibrahim Al Saud St. AL Malaz, Riyadh Kingdom of Saudi Arabia

☎ +966 58 322 9921

✉ support@gulfstars.llc

🌐 www.gulfstars.llc



United Arab Emirates

## U.A.E Office

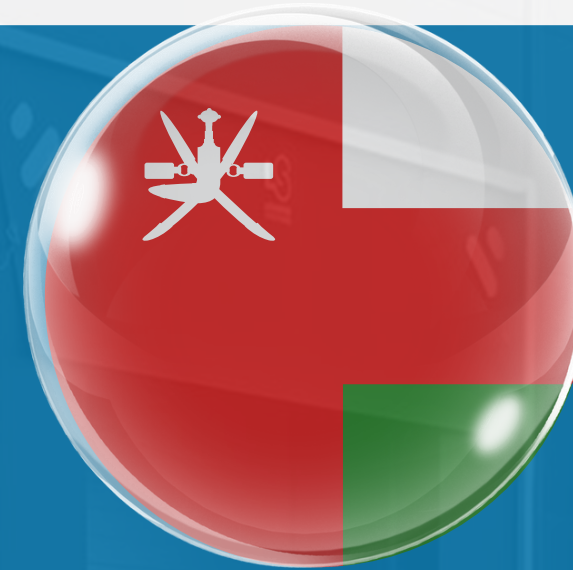
**SAAD Automatic Doors Trading**

📍 Malik Hind Abdul Gaffar St. Diera, Dubai, U.A.E.

☎ +971 50 326 2408

✉ support@gulfstars.llc

🌐 www.gulfstars.llc



Sultanate of Oman

## Branch Office

📍 P.O. Box 39, PC 420, Al Seeb Sultanate of Oman

☎ +968 79 39 0795

✉ support@gulfstars.llc

🌐 www.gulfstars.llc



United Kingdom

## U.K Office

**Custodian Automatic Doors Trading**

📍 71-75 Shelton St. Covent Garden London, United Kingdom

☎ +966 58 322 9921

✉ support@gulfstars.llc

🌐 www.gulfstars.llc



GULFSTARS.LLC

# *Thank You!*

## Contact Us:



**Mail**

[support@gulfstars.llc](mailto:support@gulfstars.llc)



**Website**

<https://gulfstars.llc>

